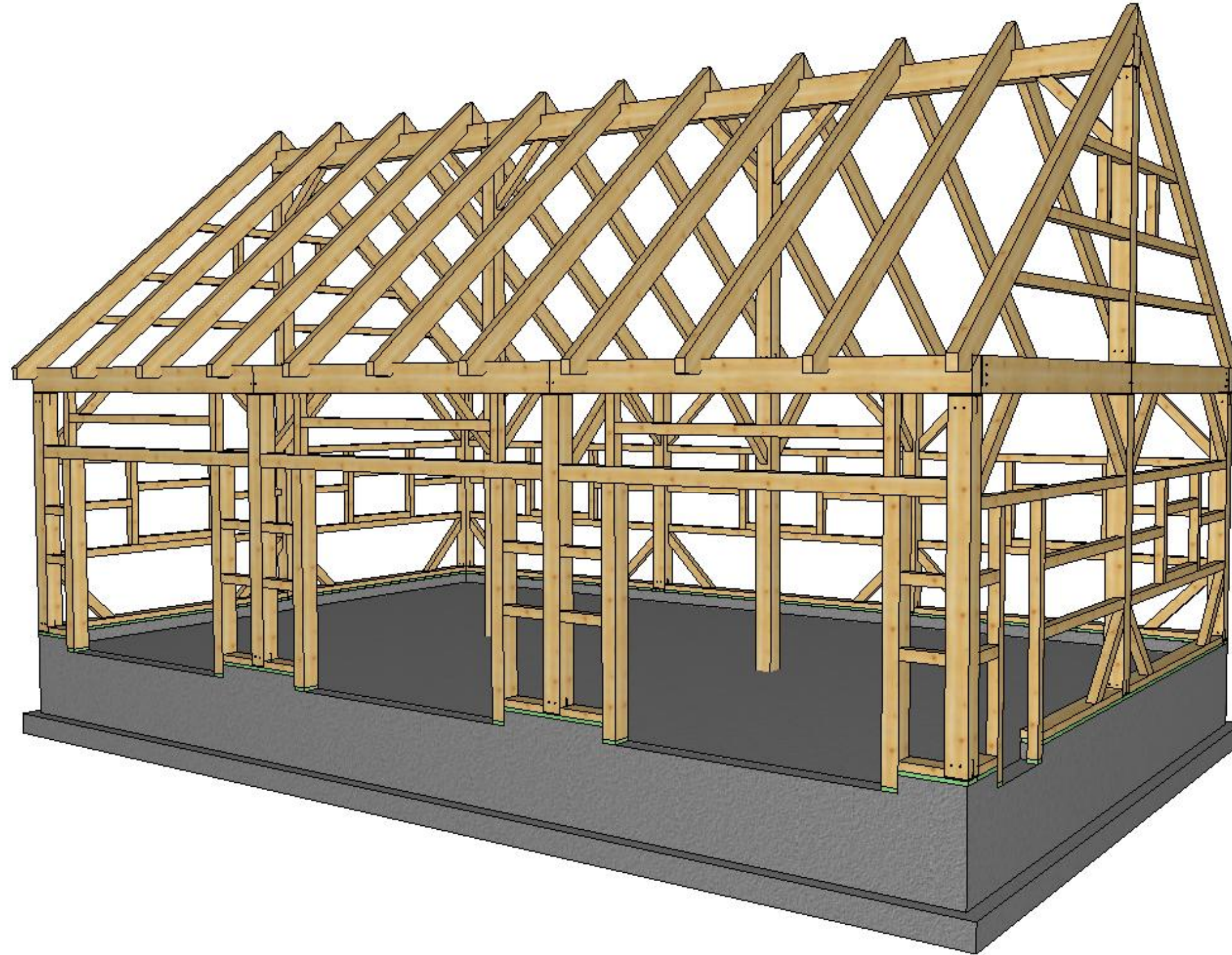


Harwinton:

26' x 42'



COPYRIGHT LAWS PROHIBIT REPRODUCTION OR USE OF THIS DRAWING IN WHOLE OR IN PART, WITHOUT THE EXPRESSED WRITTEN PERMISSION OF CONNEXT POST AND BEAM, LLC.

DO NOT SCALE DIMENSIONS ON THESE DRAWINGS. THESE IMAGES ARE MACHINE REPRODUCTIONS AND MAY CONTAIN A MARGIN OF ERROR.

CONNEXT
POST & BEAM

26' x 42'

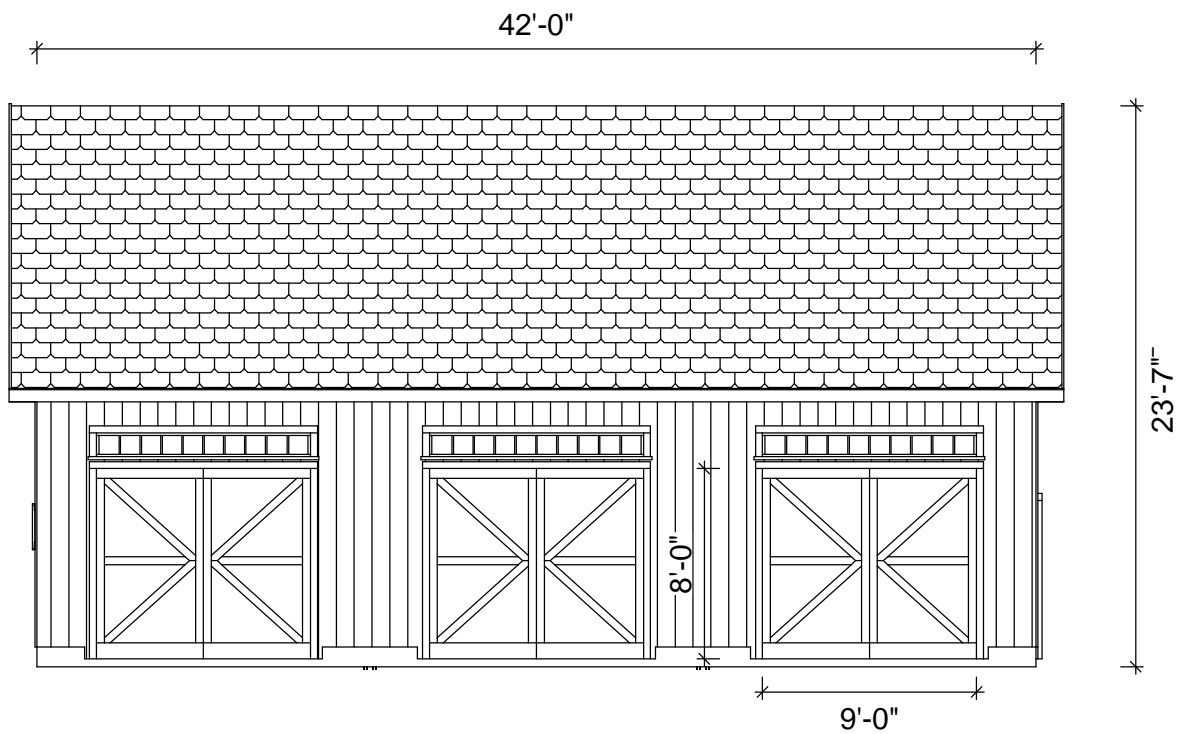
Revisions:
3/12/2020

DRAWING INFO:
Cover Sheet

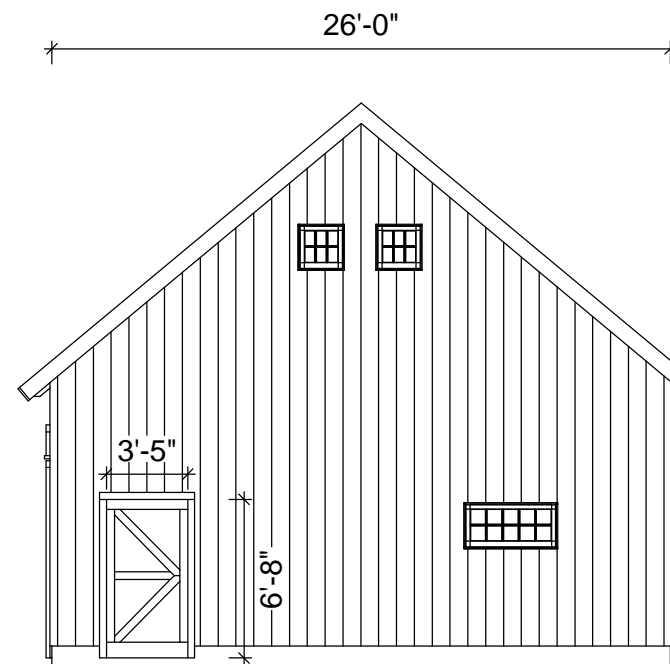
DRAWING No. 000
PRINTED: 3/23/2020

To be printed on- **11 x 17 Tabloid**

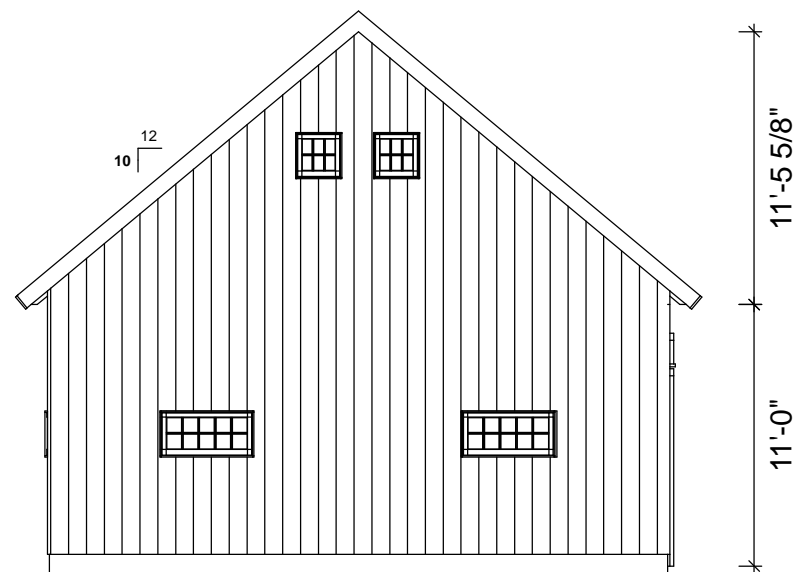
All timbers shall be equivalent to Eastern White Pine No. 2 or better unless otherwise noted



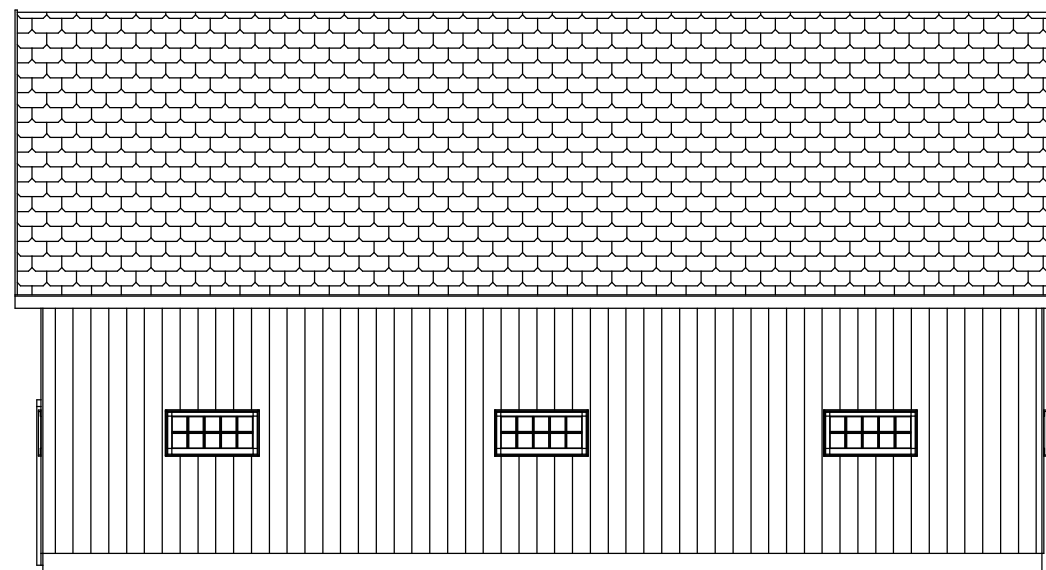
Front



Right



Left



Back

Sample Elevations



COPYRIGHT LAWS PROHIBIT REPRODUCTION OR USE OF THIS DRAWING IN WHOLE OR IN PART, WITHOUT THE EXPRESSED WRITTEN PERMISSION OF CONNEXT POST AND BEAM, LLC.

DO NOT SCALE DIMENSIONS ON THESE DRAWINGS. THESE IMAGES ARE MACHINE REPRODUCTIONS AND MAY CONTAIN A MARGIN OF ERROR.

CONNEXT
POST & BEAM

26' x 42'

Revisions:
3/12/2020

DRAWING INFO:
Elevations

DRAWING No. 001
PRINTED: 3/23/2020

Timber List

Wood Type	ITEM	Description	Pcs.	W[in]	H[in]	L[ft]	Volume[BF]
EWP	SPC4	Sill Plate Cover	3	3	8	1'-4"	8
EWP	SPC5	Sill Plate Cover	4	3	8	1'-8"	13
EWP	SPC6	Sill Plate Cover	1	3	8	7'-4"	15
EWP	SPC1	Sill Plate Cover	3	3	8	12'	72
EWP	SPC2	Sill Plate Cover	2	3	8	13'	52
EWP	SPC3	Sill Plate Cover	1	3	8	13'-4"	27
EWP	SN	Siding Nailer	8	4	4	1'-4"	14
EWP	SN	Siding Nailer	12	4	4	1'-8"	27
EWP	SN	Siding Nailer	4	4	4	2'-1 1/4"	11
EWP	SN	Siding Nailer	6	4	4	2'-2 1/2"	18
EWP	SN	Siding Nailer	6	4	4	3'-7 7/8"	29
EWP	SN	Siding Nailer	12	4	4	3'-8 15/16"	60
EWP	SN	Siding Nailer	12	4	4	4'-1/4"	64
EWP	SN	Siding Nailer	4	4	4	4'-1 7/8"	22
EWP	SN	Siding Nailer	2	4	4	4'-3 7/8"	12
EWP	SN	Siding Nailer	4	4	4	4'-7 3/16"	24
EWP	SN	Siding Nailer	2	4	4	7'-4"	20
EWP	SN	Siding Nailer	4	4	4	7'-6"	40
EWP	SN	Siding Nailer	2	4	4	7'-6 7/16"	20
EWP	SN	Siding Nailer	3	4	4	9'	36
EWP	SN	Siding Nailer	4	4	4	9'-10 5/8"	52
EWP	SN	Siding Nailer	7	4	4	12'	112
EWP	SN	Siding Nailer	4	4	4	13'	69
EWP	SN	Siding Nailer	2	4	4	13'-4"	36
EWP	KB1	Knee Brace	41	4	5	3'-10"	262
EWP	R1	Rafter	22	4	10	18'-4 7/8"	1350
EWP	DP1	Door Post	6	6	8	7'-10 1/2"	189
EWP	DP2	Door Post	2	6	8	13'	104
EWP	DP3	Door Post	1	6	8	13'-4"	53
EWP	J1	Joist	12	6	10	12'-11 1/8"	776
EWP	J2	Joist	4	6	10	13'-3 1/8"	265
EWP	P4	Post	2	8	8	9'-6 1/2"	102
EWP	P5	Post	2	8	8	9'-6 1/2"	102
EWP	P1	Post	4	8	8	9'-11 15/16"	214
EWP	P2	Post	6	8	8	9'-11 15/16"	320
EWP	P3	Post	2	8	8	11'-10 15/16"	127
EWP	G1	Girder	8	8	12	12'-4 1/2"	792
EWP	PB1	Plate Beam	2	8	12	14'	224
EWP	PB3	Plate Beam	2	8	12	14'	224
EWP	PB2	Plate Beam	2	8	12	14'	224

EWP	RP1	Ridge Plate	2	8	12	14'	224
EWP	RP2	Ridge Plate	1	8	12	14'	112
PT	SPC12	Sill Plate Cover	2	2	4	4"	
PT	SPC11	Sill Plate Cover	6	2	8	6"	4
PT	PTS1	Pressure Treated Sill	1	2	8	1'-4 1/2"	2
PT	PTS1	Pressure Treated Sill	2	2	8	2'	5
PT	PTS1	Pressure Treated Sill	2	2	8	4'	11
PT	PTS1	Pressure Treated Sill	1	2	8	20'-1/2"	27
PT	PTS1	Pressure Treated Sill	1	2	8	24'-9"	33
PT	PTS1	Pressure Treated Sill	1	2	8	42'	56

Wood Type	Pcs.	Volume[BF]
EWP	233	6517
PT	16	138
Total	249	6655

EWP- Eastern White Pine

PT- Pressure Treated

Fastener List

ITEM	Pieces
1/2" Aluminum Pins	184
3-1/2" GRK RSS Screw	192
5-1/8" GRK RSS Screw	180
5" GRK Caliburn Screw	60
CR6010	32
CR8012	8
CR8080	22
CR83W	10

This timber list and fastener list is just a guideline. Please check and verify that all dimension are correct before ordering materials.

Connex is not responsible for left over materials.

General Notes:

1). The frame design shown has not been engineered and is only intended as a general outline. It is the sole responsibility of the homeowner and/or contractor to determine if local or state code requires an engineer's stamp on plans before erection. Connex does not design to a specific area and for that matter will not hold any reasonability or warranty plans if plans do not satisfy the requirements of local and/or state building codes.

2). The homeowner/contractor is responsible for locating and the protection of all existing utilities and adjacent structures throughout all phases of construction.

3). The homeowner and/or contractor (builder) is responsible for implementing job site safety and construction procedures in accordance with national, state, and local safety requirements. The design, adequacy and safety of erection, bracing, shoring, temporary supports, etcetera is the sole responsibility of the builder. The builder is responsible for the stability of the structure prior to the completion of all gravity and lateral framing, roof and floor diaphragms and finish materials. Connex assumes no responsibility for any changes or modifications that may be made to the plans by the builder.

4). These plans do not cover work in areas not explicitly shown on the plans, including stick framed portions, adjacent buildings, basements/crawl- space areas, or any other changes or modifications.

5). Homeowner/contractor shall verify all dimensions and job site conditions before commencing work and shall report any discrepancies to Connex if modifications need to be made.

6). Use written dimensions. Do not use scaled dimensions. Where no dimension is provided, consult Connex for clarification before proceeding with the work.

7). Timbers- Unless otherwise noted, solid sawn timber shall be equivalent to ungraded eastern white pine No. 2 or better. Timbers shall be rough sawn, and sized to full stated dimensions (e.g. 8x8 = 8.0" x 8.0").

8). Timber screws- Unless noted otherwise, all screws shall be GRK RSS, GRK Caliburn or Fastenmaster Timberloks. Screw holes shall not be pre-drilled unless otherwise noted.



COPYRIGHT LAWS PROHIBIT REPRODUCTION OR USE OF THIS DRAWING IN WHOLE OR IN PART, WITHOUT THE EXPRESSED WRITTEN PERMISSION OF CONNEXT POST AND BEAM, LLC.

DO NOT SCALE DIMENSIONS ON THESE DRAWINGS. THESE IMAGES ARE MACHINE REPRODUCTIONS AND MAY CONTAIN A MARGIN OF ERROR.

CONNEXT
POST & BEAM

26' x 42'

Revisions:
3/23/2020

DRAWING INFO:
Material List

DRAWING No. 026
PRINTED: 3/23/2020