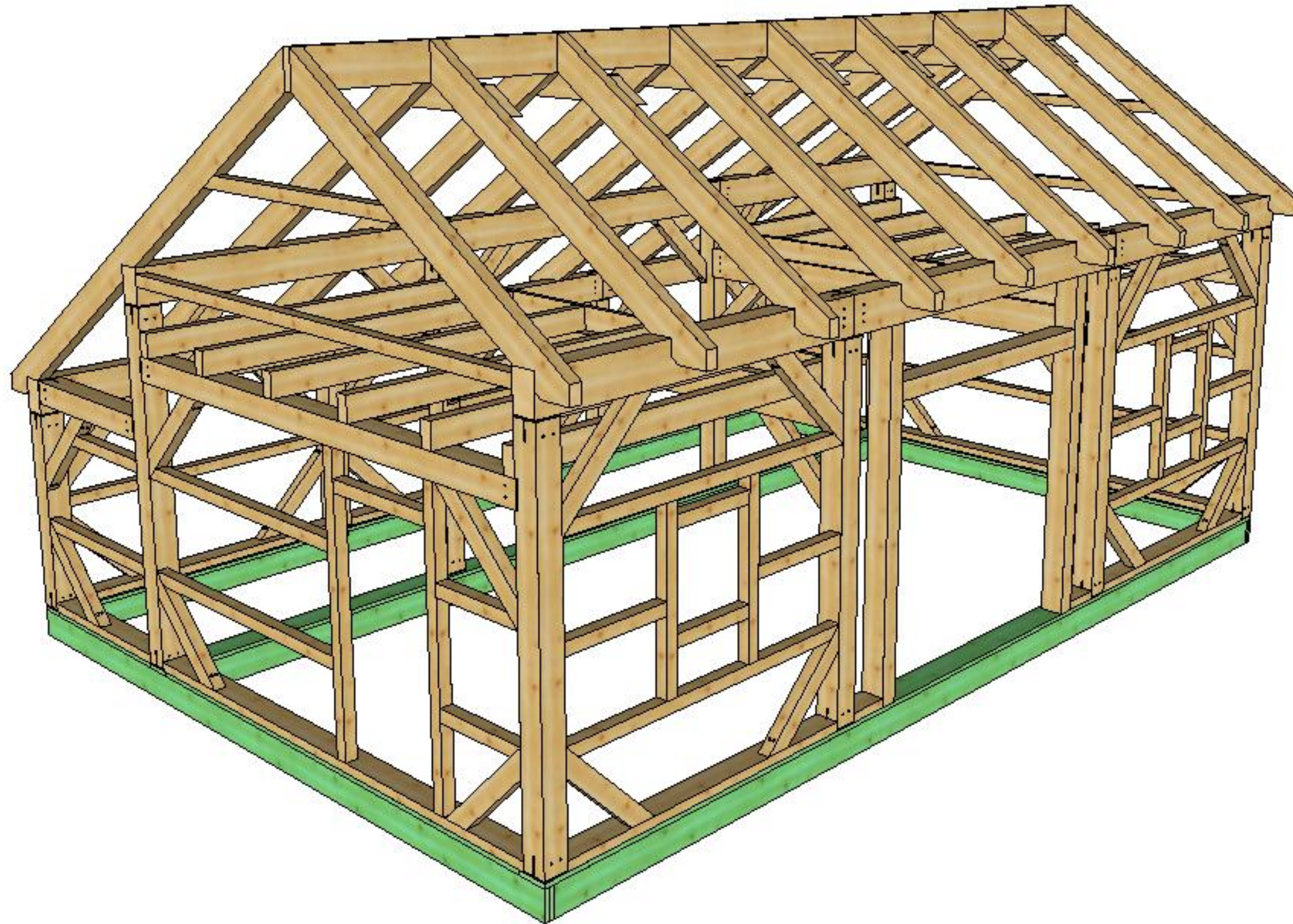


Hebron

22' x 32'



To be printed on- **11 x 17 Tabloid**

*NOTE- All timbers shall be Hemlock
Car 2 or better unless otherwise noted.*

-Foundation Done By Others



COPYRIGHT LAWS PROHIBIT REPRODUCTION OR USE OF THIS DRAWING IN WHOLE OR IN PART, WITHOUT THE EXPRESSED WRITTEN PERMISSION OF CONNEXT POST AND BEAM, LLC.

DO NOT SCALE DIMENSIONS ON THESE DRAWINGS. THESE IMAGES ARE MACHINE REPRODUCTIONS AND MAY CONTAIN A MARGIN OF ERROR.

CONNEXT
POST & BEAM

22' x 32'

Revisions:
3/12/2020

DRAWING INFO:
Cover Sheet

DRAWING No. 000
PRINTED: 3/23/2020



COPYRIGHT LAWS PROHIBIT REPRODUCTION OR USE OF THIS DRAWING IN WHOLE OR IN PART, WITHOUT THE EXPRESSED WRITTEN PERMISSION OF CONNEXT POST AND BEAM, LLC.

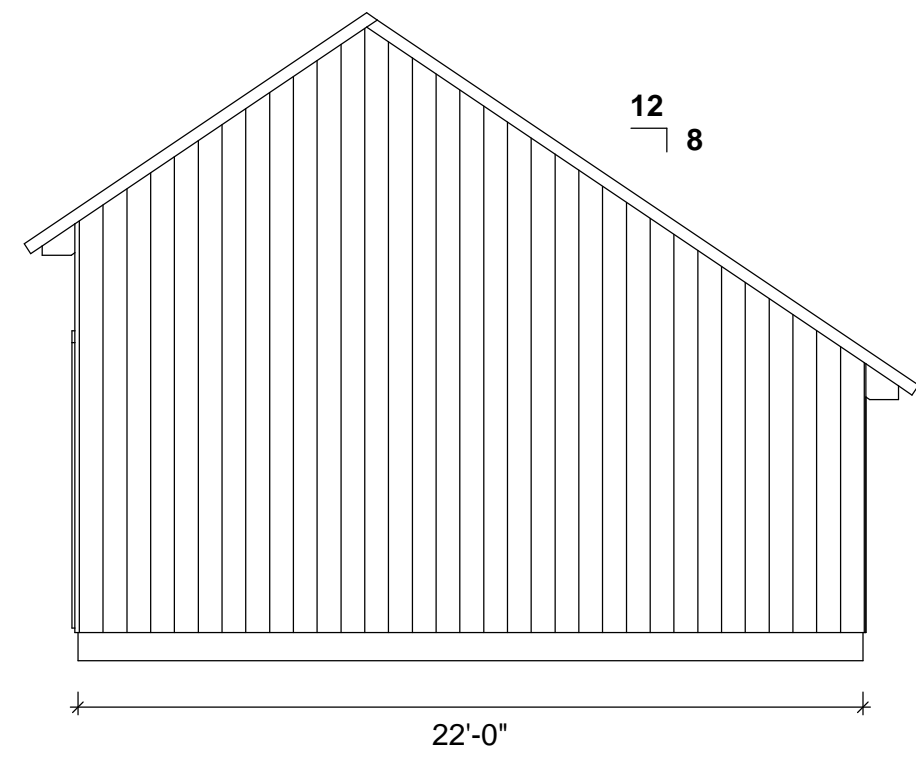
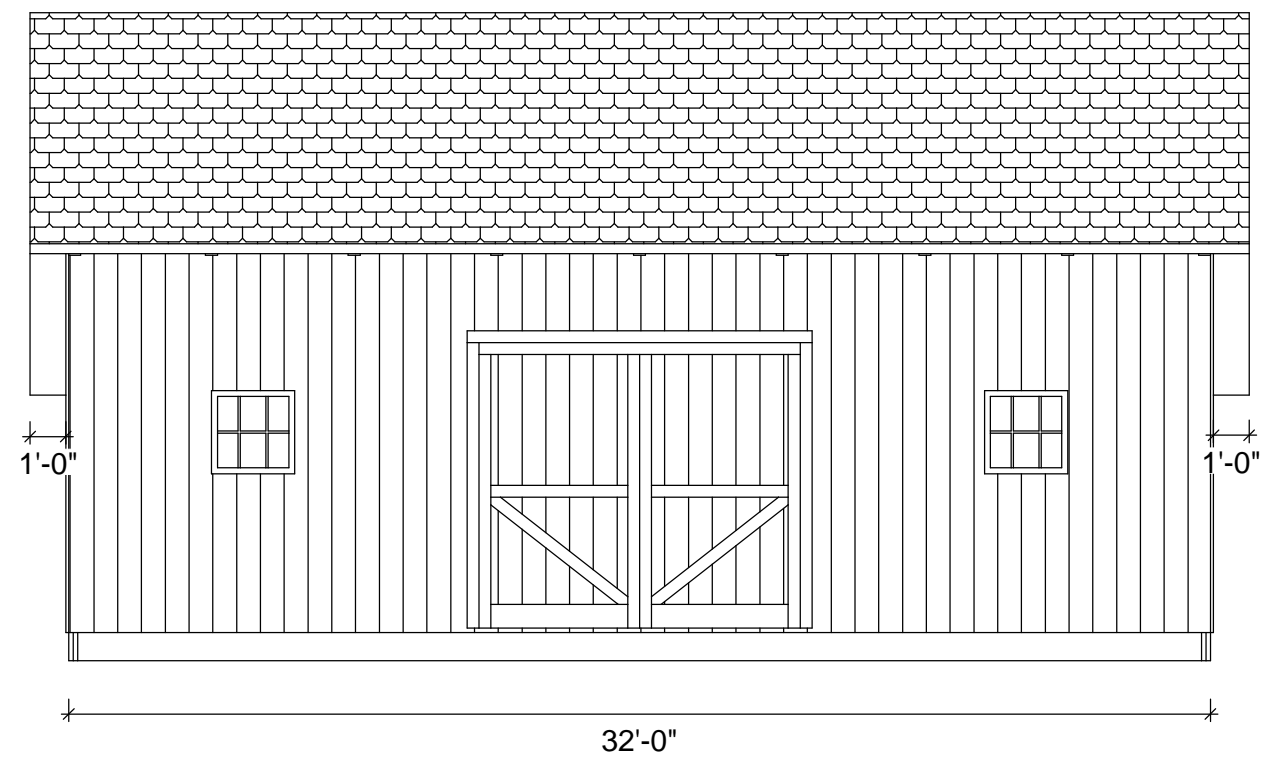
DO NOT SCALE DIMENSIONS ON THESE DRAWINGS. THESE IMAGES ARE MACHINE REPRODUCTIONS AND MAY CONTAIN A MARGIN OF ERROR.

CONNEXT
POST & BEAM
22' x 32'

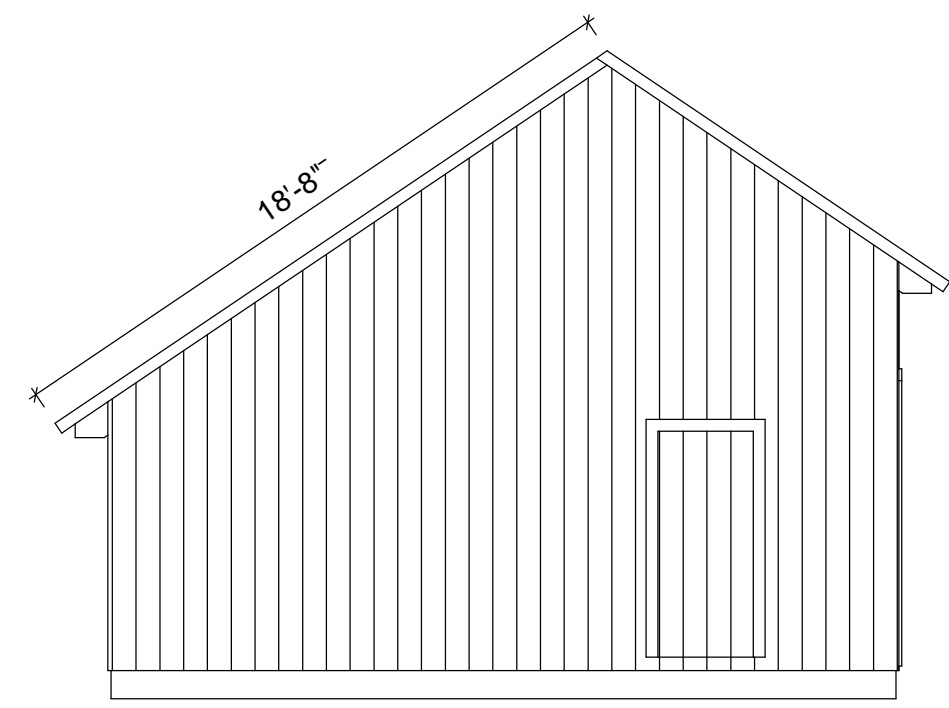
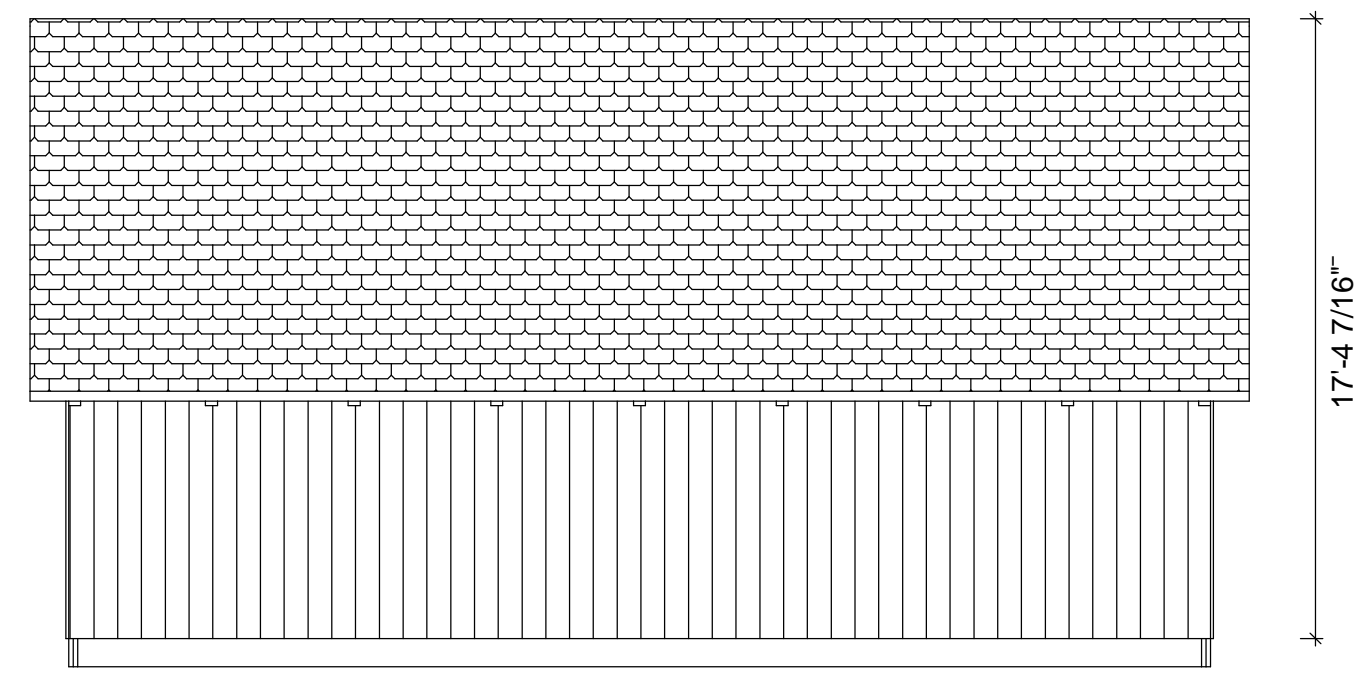
Revisions:
3/12/2020

DRAWING INFO:
Elevations

DRAWING No. 001
PRINTED: 3/23/2020



Sample Elevations:
Do Not Scale



Timber List:

Wood Type	Part	QTY	W(in.)	H(in.)	Length	BF
HF	KB1	42	4	6	3'-8"	308
TSW	PTS1	3	2	10	32'	160
TSW	PTS1	2	2	10	14'-5"	48
TSW	PTS1	2	2	10	5'-2 1/2"	17
TSW	PTS1	4	2	10	22'	147
TSW	PTS1	15	2	10	31'-6"	788
TSW	PTS1	6	2	10	14'-7"	146
TSW	PTS1	6	2	10	5'-6 1/2"	55
HF	PB1	6	8	12	10'	480
HF	PB2	3	8	12	12'	288
HF	SC3	2	3	8	14'-8"	58
HF	SC1	4	3	8	9'	72
HF	SC5	2	3	8	1'-2"	5
HF	SC4	2	3	8	5'-4"	21
HF	SC2	1	3	8	11'-4"	23
HF	RB1	4	3	12	8'	96
HF	R1	9	4	10	10'-11 1/2"	329
HF	J1	12	4	8	10'	320
HF	G1	2	8	12	14'-8 15/16"	236
HF	CT1	7	4	8	5'-2 1/2"	97
HF	JT1	2	2	8	15'	40
HF	SN	2	4	4	2'-8"	8
HF	SN	4	4	4	14'-8"	79
HF	SN	2	4	4	7'-9"	21
HF	SN	1	4	4	3'-4"	4
HF						
HF	SN	2	4	4	7'-7 5/16"	20
HF	SN	2	4	4	8'	22
HF	SN	2	4	4	5'-4"	14
HF	SN	2	4	4	3'-7 7/16"	10
HF	P1	4	8	8	9'-10 15/16"	212
HF	SN	4	4	4	9'-	48
HF	SN	4	4	4	3'	16
HF	TB1	2	8	8	14'-8 15/16"	158
HF	TB2	2	8	8	5'-2 15/16"	56
HF	P3	2	8	8	5'-10 3/8"	62
HF	SN	2	4	4	9'	24
HF	SN	4	4	4	4'-6 3/4"	24
HF	SN	4	4	4	2'-4"	12
HF	P2	4	8	8	9'-10 15/16"	212
HF	P4	2	8	8	5'-10 3/8"	62

This timber list and fastener list is just a guideline. Please check and verify that all dimension are correct before ordering materials.

Connext, LLC is not responsible for left over materials.

Wood Type	Part	QTY	W(in.)	H(in.)	Length	BF
HF	SN	1	4	4	11'-4"	15
HF	DB1	2	6	8	10'	80
HF	DB2	1	6	8	8'	32
HF	FR2	4	2	4	18'-3 1/2"	49
HF	FR1	4	2	4	11'-5/8"	29
HF	FRB1	34	2	4	9'	17
HF	R2	9	4	10	18'-2 3/8"	546

Wood Type	Pcs[Pcs]	Volume[BF]
HF	204	4205
TSW	38	1361
Total	242	5566

Order List: **** Note- Pressure treated lumber is not included on the order list, only rough sawn timbers****

Wood Type	W(in.)	H(in.)	Length(ft.)	QTY
HF	2	4	8'	3
HF	2	4	12'	4
HF	2	4	20'	4
HF	2	8	16'	2
HF	3	8	16'	7
HF	3	12	8'	4
HF	4	4	8'	4
HF	4	4	10'	1
HF	4	4	12'	4
HF	4	4	14'	3
HF	4	4	16'	7
HF	4	6	8'	21
HF	4	8	10'	19
HF	4	10	20'	18
HF	6	8	18'	2
HF	8	8	12'	2
HF	8	8	16'	8
HF	8	12	16'	5
HF	8	12	20'	3
HF	Sum		1450'	121

Connector List:

T-Rex Connectors	QTY
CR8080	26
CR8012	4
CR83W	6
5 1/8" GRK RSS Screws	216
8" GRK RSS Screws	186
10" GRK RSS Screws	48
12" GRK RSS Screws	27

General Notes:

1). The frame design shown has not been engineered and is only intended as a general outline. It is the sole responsibility of the homeowner and/or contractor to determine if local or state code requires an engineer's stamp on plans before erection. Connext does not design to a specific area and for that matter will not hold any reasonability or warranty plans if plans do not satisfy the requirements of local and/or state building codes.

2). The homeowner/contractor is responsible for locating and the protection of all existing utilities and adjacent structures throughout all phases of construction.

3). The homeowner and/or contractor (builder) is responsible for implementing job site safety and construction procedures in accordance with national, state, and local safety requirements. The design, adequacy and safety of erection, bracing, shoring, temporary supports, etcetera is the sole responsibility of the builder. The builder is responsible for the stability of the structure prior to the completion of all gravity and lateral framing, roof and floor diaphragms and finish materials. Connext assumes no responsibility for any changes or modifications that may be made to the plans by the builder.

4). These plans do not cover work in areas not explicitly shown on the plans, including stick framed portions, adjacent buildings, basements/crawl- space areas, or any other changes or modifications.

5). Homeowner/contractor shall verify all dimensions and job site conditions before commencing work and shall report any discrepancies to Connext if modifications need to be made.

6). Use written dimensions. Do not use scaled dimensions. Where no dimension is provided, consult Connext for clarification before proceeding with the work.

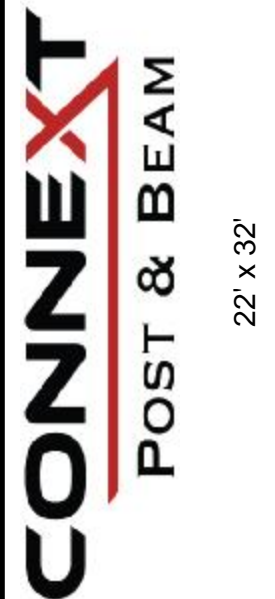
7). Timbers- Unless otherwise noted, solid sawn timber shall be equivalent to ungraded eastern white pine No. 2 or better. Timbers shall be rough sawn, and sized to full stated dimensions (e.g. 8x8 = 8.0" x 8.0").

8). Timber screws- Unless noted otherwise, all screws shall be GRK RSS, GRK Caliburn or Fastenmaster Timberloks. Screw holes shall not be pre-drilled unless otherwise noted.



COPYRIGHT LAWS PROHIBIT REPRODUCTION OR USE OF THIS DRAWING IN WHOLE OR IN PART, WITHOUT THE EXPRESSED WRITTEN PERMISSION OF CONNEX POST AND BEAM, LLC.

DO NOT SCALE DIMENSIONS ON THESE DRAWINGS. THESE IMAGES ARE MACHINE REPRODUCTIONS AND MAY CONTAIN A MARGIN OF ERROR.



Revisions:
3/23/2020

DRAWING INFO:
Material List

DRAWING No. 012
PRINTED: 3/23/2020