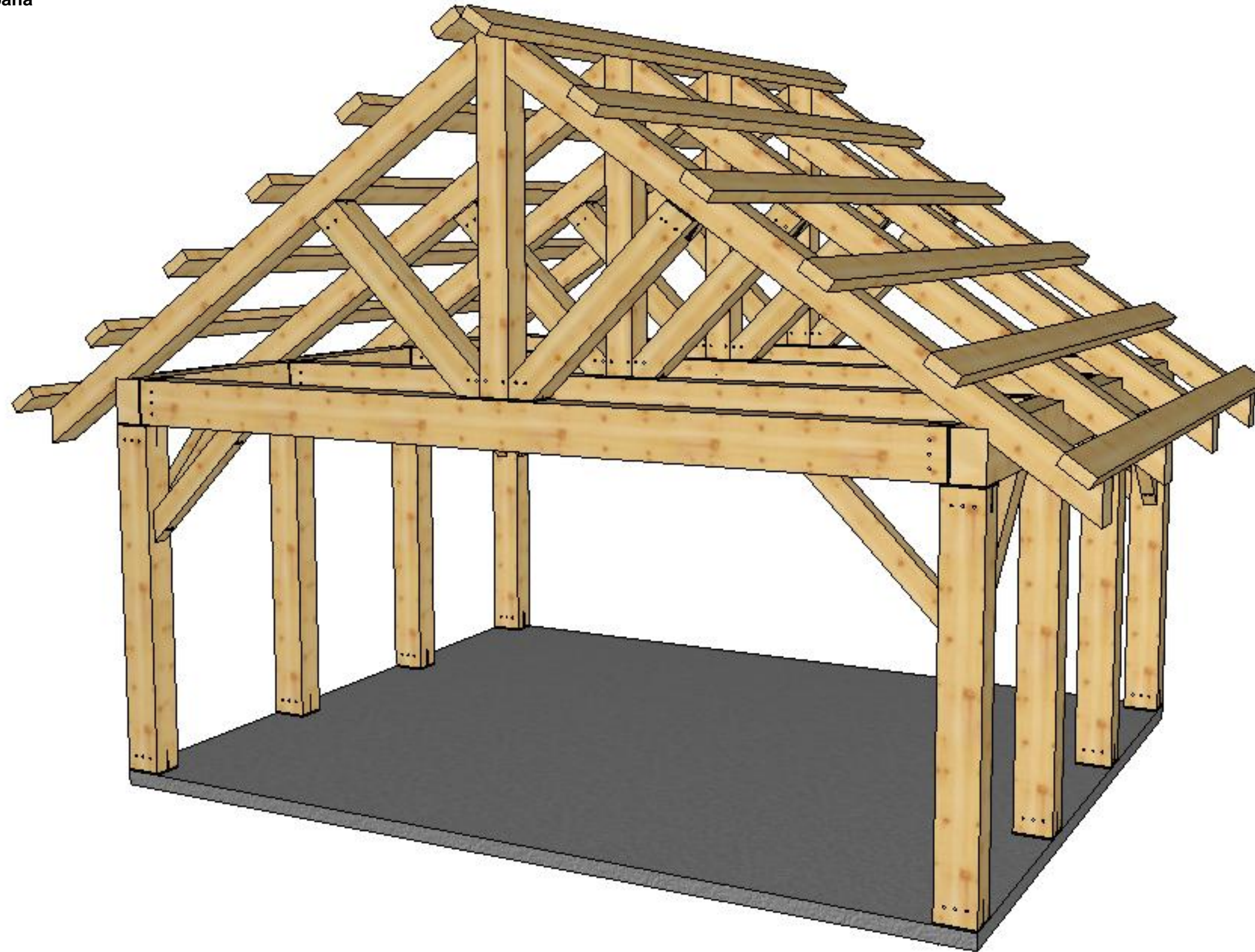


Lakeville:

20' x 16' Cabana



COPYRIGHT LAWS PROHIBIT REPRODUCTION OR USE OF THIS DRAWING, IN WHOLE OR IN PART, WITHOUT THE EXPRESSED WRITTEN PERMISSION OF CONNEXT POST AND BEAM, LLC.

DO NOT SCALE DIMENSIONS ON THESE DRAWINGS. THESE IMAGES ARE MACHINE REPRODUCTIONS AND MAY CONTAIN A MARGIN OF ERROR.

CONNEXT
POST & BEAM
20' x 16' Cabana

Revisions:
5/21/2020

DRAWING INFO:
Cover Sheet

DRAWING No. 000
PRINTED: 6/3/2020

To be printed on- **11 x 17 Tabloid**

All timbers shall be equivalent to Eastern White Pine No. 2 or better unless otherwise noted



COPYRIGHT LAWS PROHIBIT REPRODUCTION OR USE OF THIS DRAWING, IN WHOLE OR IN PART, WITHOUT THE EXPRESSED WRITTEN PERMISSION OF CONNEXT POST AND BEAM, LLC.

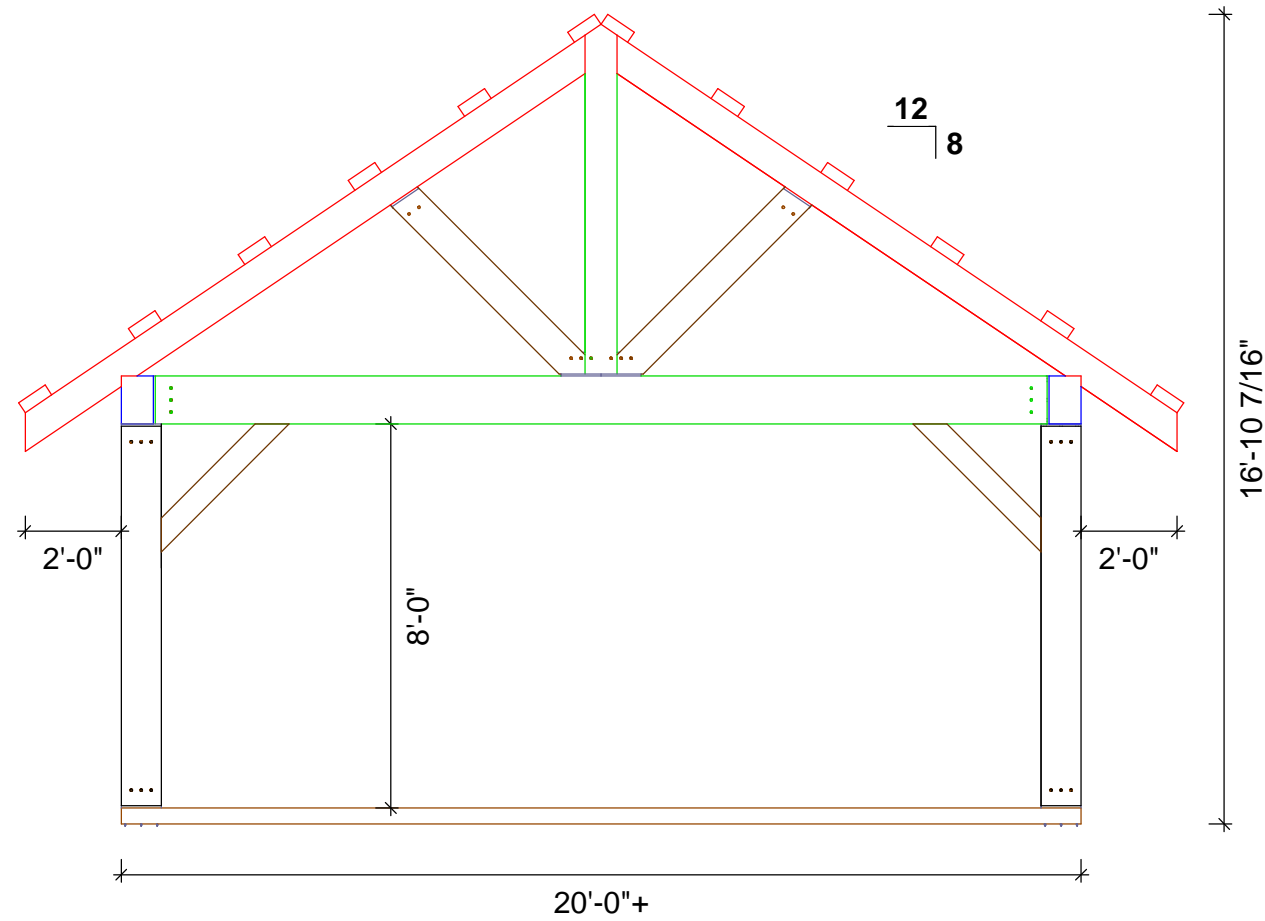
DO NOT SCALE DIMENSIONS ON THESE DRAWINGS. THESE IMAGES ARE MACHINE REPRODUCTIONS AND MAY CONTAIN A MARGIN OF ERROR.

CONNEXT
POST & BEAM
20' x 16' Cabana

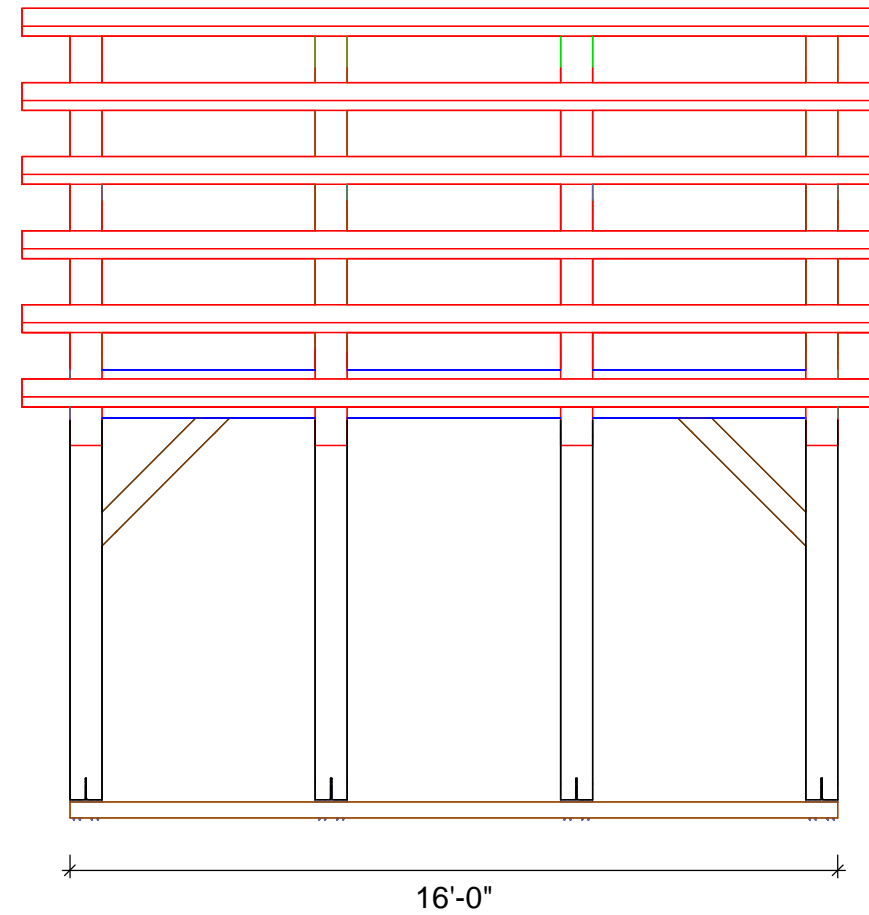
Revisions:
5/21/2020

DRAWING INFO:
Elevations

DRAWING No. 001
PRINTED: 6/3/2020



Front/Back



Right/Left

Elevations:

Scale: 1/4" = 1'-0"

Timber List:

Wood Type	Part Number	Description	QTY	W[in]	H[in]	L[ft]	VOL[BF]
EWP	TB1	Tie Beam	4	8	12	18'-6 15/16"	594
EWP	PB1	Plate Beam	2	8	12	16'	256
EWP	P1	Post	8	8	10	7'-10 15/16"	422
EWP	R1	Rafter	8	8	8	14'-6 1/4"	620
EWP	P2	Post	4	8	8	7'-3 7/16"	155
EWP	AB1	Angle Brace	8	8	8	5'-3 3/4"	229
EWP	RP1	Roof Purlin	12	3	8	18'	432
EWP	KB1	Knee Brace	8	4	6	3'-9 1/4"	60

Wood Type	Volume[BF]
EWP	2767
Total	2767

EWP - Eastern White Pine

Fastener List:

Item	Description	Pieces
1/2" Aluminum Pins	T Rex Connectors	112
5-1/8" GRK RSS Screw	T Rex Connectors	192
5" GRK Caliburn	T Rex to Concrete	48
CR8010	Posts, Angle Brace/Tie	24
CR8012	Plate/Tie	8
CR8080	Angle Brace/Rafter	8
6" GRK RSS Screws	Purlins	96
8" GRK RSS Screws	Knee Braces	32
10" GRK RSS Screws	Rafters	32

All material lists are just a guideline. Please check and verify that all dimension and quantities are correct before ordering materials.

ConnexT is not responsible for left over materials.

General Notes:

1). The frame design shown has not been engineered and is only intended as a general outline. It is the sole responsibility of the homeowner and/or contractor to determine if local or state code requires an engineer's stamp on plans before erection. ConnexT does not design to a specific area and for that matter will not hold any reasonability or warranty plans if plans do not satisfy the requirements of local and/or state building codes.

2). The homeowner/contractor is responsible for locating and the protection of all existing utilities and adjacent structures throughout all phases of construction.

3). The homeowner and/or contractor (builder) is responsible for implementing job site safety and construction procedures in accordance with national, state, and local safety requirements. The design, adequacy and safety of erection, bracing, shoring, temporary supports, etcetera is the sole responsibility of the builder. The builder is responsible for the stability of the structure prior to the completion of all gravity and lateral framing, roof and floor diaphragms and finish materials. ConnexT assumes no responsibility for any changes or modifications that may be made to the plans by the builder.

4). These plans do not cover work in areas not explicitly shown on the plans, including stick framed portions, adjacent buildings, basements/crawl- space areas, or any other changes or modifications.

5). Homeowner/contractor shall verify all dimensions and job site conditions before commencing work and shall report any discrepancies to ConnexT if modifications need to be made.

6). Use written dimensions. Do not use scaled dimensions. Where no dimension is provided, consult ConnexT for clarification before proceeding with the work.

7). Timbers- Unless otherwise noted, solid sawn timber shall be equivalent to ungraded eastern white pine No. 2 or better. Timbers shall be rough sawn, and sized to full stated dimensions (e.g. 8x8 = 8.0" x 8.0").

8). Timber screws- Unless noted otherwise, all screws shall be GRK RSS, GRK Caliburn or Fastenmaster Timberloks. Screw holes shall not be pre-drilled unless otherwise noted.



COPYRIGHT LAWS PROHIBIT REPRODUCTION OR USE OF THIS DRAWING, IN WHOLE OR IN PART, WITHOUT THE EXPRESSED WRITTEN PERMISSION OF CONNEXT POST AND BEAM, LLC.

DO NOT SCALE DIMENSIONS ON THESE DRAWINGS. THESE IMAGES ARE MACHINE REPRODUCTIONS AND MAY CONTAIN A MARGIN OF ERROR.

CONNEXT
POST & BEAM
20' x 16' Cabana

Revisions:
5/21/2020

DRAWING INFO:
Timber List

DRAWING No. 002
PRINTED: 6/3/2020