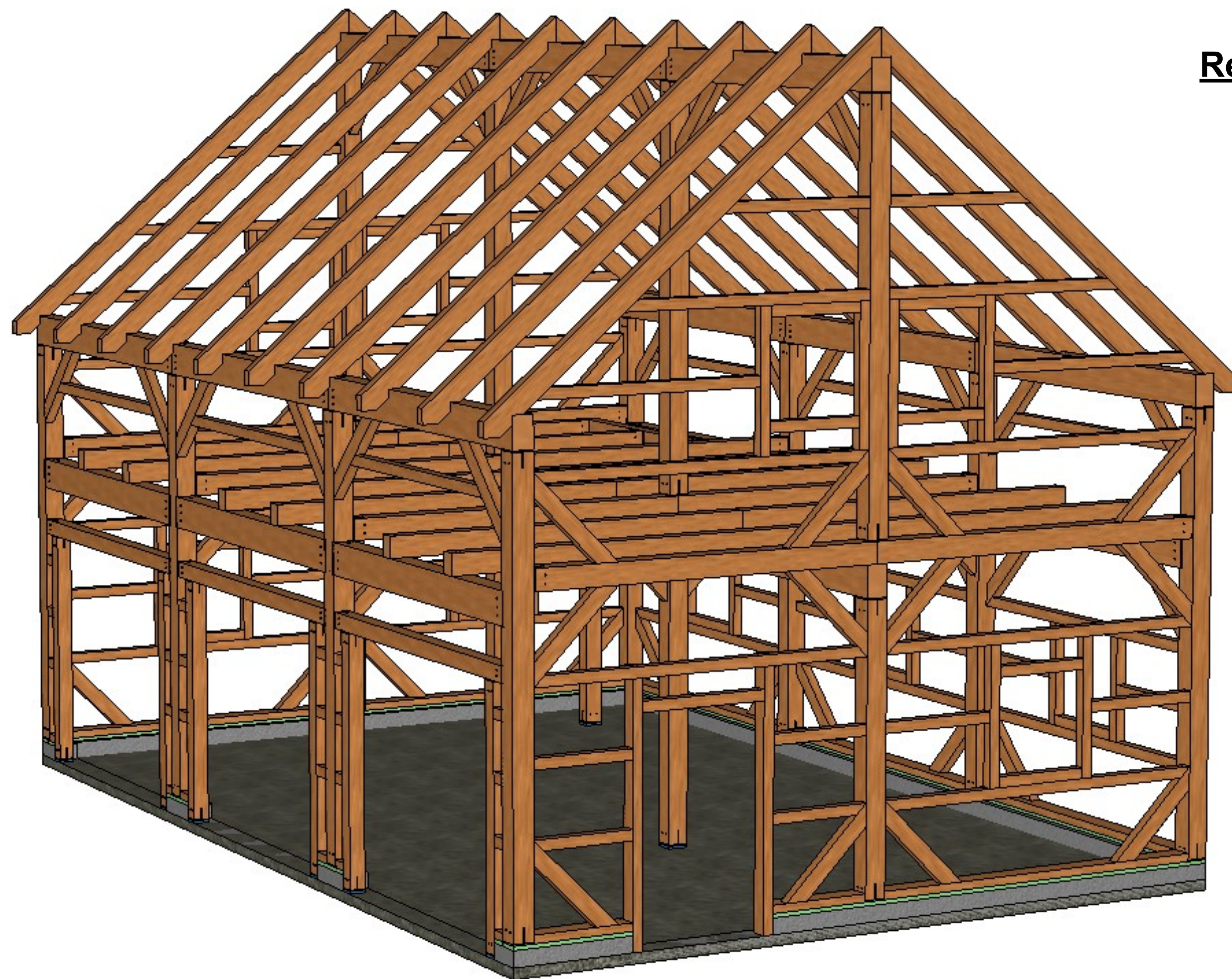
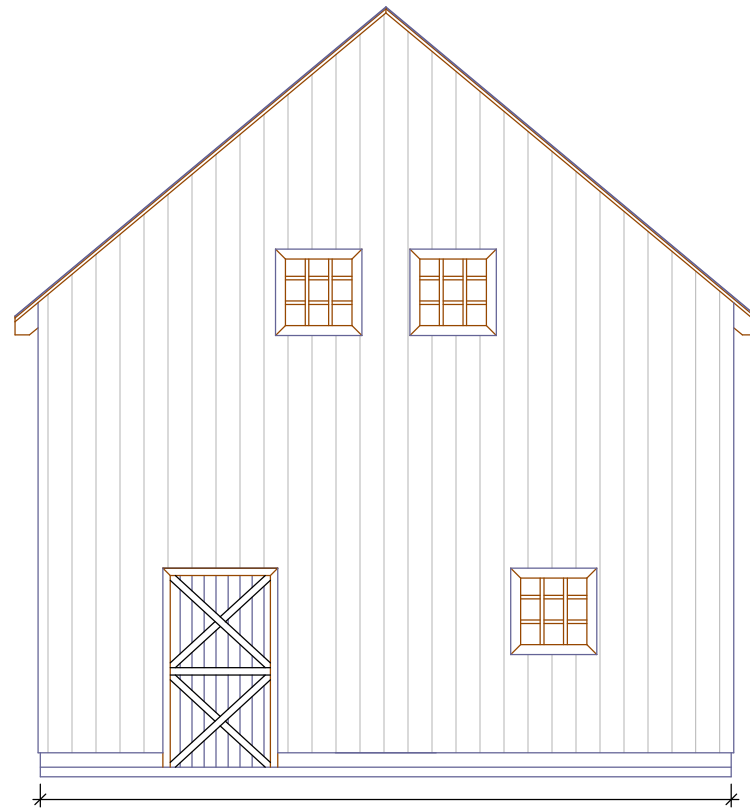


Redding V2, 24' x 36'

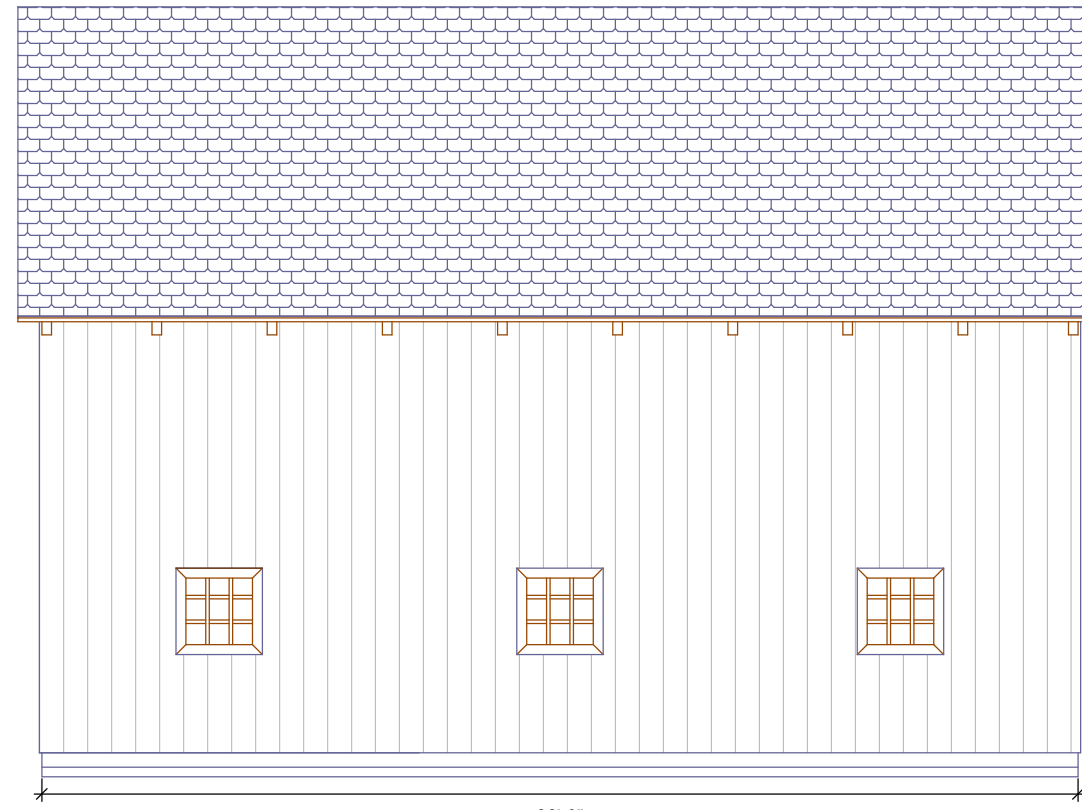


COPYRIGHT LAWS PROHIBIT REPRODUCTION OR USE OF THIS DRAWING, IN WHOLE OR IN PART, WITHOUT THE EXPRESSED WRITTEN PERMISSION OF "CONNEXT POST AND BEAM"



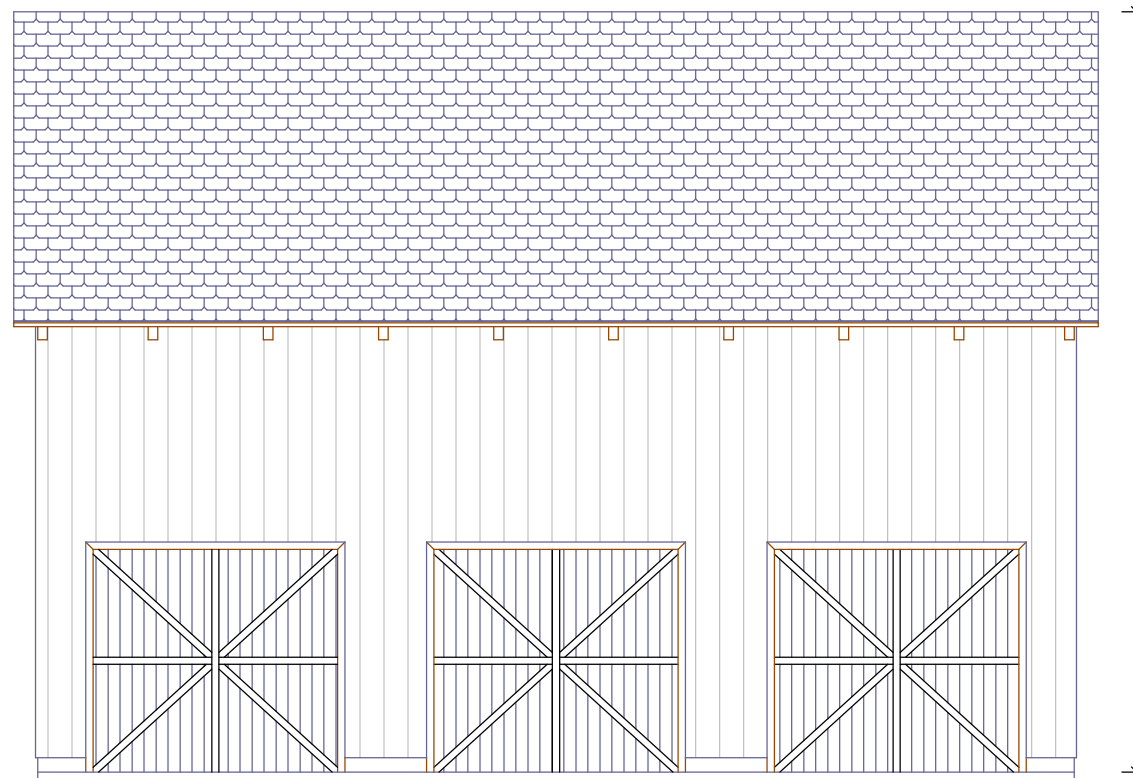
24'-0"

**FRONT**



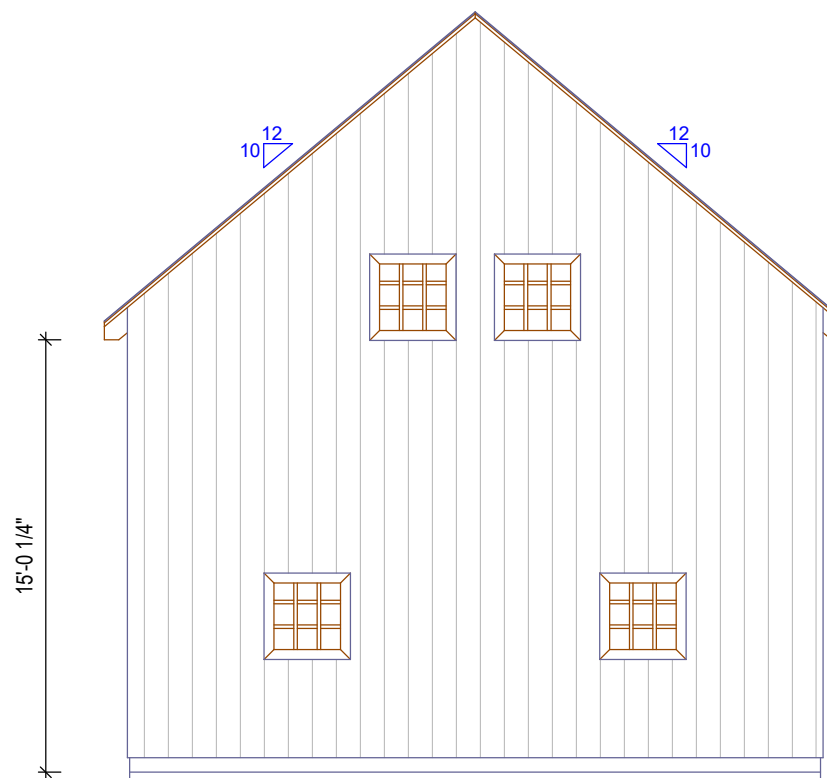
36'-0"

**RIGHT**



26'-4 15/16"

**LEFT**



15'-0 1/4"

**BACK**

**Redding V2, 24' x 36'**

DRAWING INFO:  
ELEVATIONS

DRAWING No. 002

PRINTED: 14.07.2022

to be printed on:  
11" x 17" TABLOID



# General Notes:

1). The frame design shown has not been engineered and is only intended as a general outline. It is the sole responsibility of the homeowner and/or contractor to determine if local or state code requires an engineer's stamp on plans before erection, Connex Post and Beam does not design to a specific area and for that matter will not hold any reasonability or warranty plans if plans do not satisfy the requirements of local and/or state building codes.

2). The homeowner/contractor is responsible for locating and the protection of all existing utilities and adjacent structures throughout all phases of construction.

3). The homeowner and/or contractor (builder) is responsible for implementing job site safety and construction procedures in accordance with national, state, and local safety requirements. The design, adequacy and safety of erection, bracing, shoring, temporary supports, etcetera is the sole responsibility of the builder. The builder is responsible for the stability of the structure prior to the completion of all gravity and lateral framing, roof and floor diaphragms and finish materials. Connex Post and Beam assumes no responsibility for any changes or modifications that may be made to the plans by the builder.

4). These plans do not cover work in areas not explicitly shown on the plans, including stick framed portions, adjacent buildings, basements/crawl- space areas, or any other changes or modifications.

5). Homeowner/contractor shall verify all dimensions and job site conditions before commencing work and shall report any discrepancies to Connex Post and Beam if modifications need to be made.

6). Use written dimensions. Do not use scaled dimensions. Where no dimension is provided, consult Connex Post and Beam for clarification before proceeding with the work.

7). Timbers- Unless otherwise noted, solid sawn timber shall be equivalent to ungraded eastern white pine/douglas fir no. 2 or better. Timbers shall be rough sawn, and sized to full stated dimensions (e.g. 8x8 = 8.0"x8.0").

8). Timber screws- Unless noted otherwise, all screws shall be GRK RSS, GRK Caliburn or similar.

## Timberlist

Sort.#	Beam-Name	Pcs.	widht [ft]	height [ft]	length [ft]
1	Knee Brace	62	6"	4"	3'-10"
2	Plate Post	4	8"	8"	13'-10 15/16"
3	Plate Post	4	8"	8"	13'-11"
4	Plate Post	2	8"	8"	8'-10 15/16"
5	Plate	2	8"	1'	11'-4 15/16"
6, 7	Plate	9	8"	1'	12'
8	Girder	4	8"	1'	11'-15/16"
9	Girder	2	8"	1'	12'
10	Girder	1	8"	1'	12'
11	Floor Joist	8	8"	8"	11'-3 1/2"
12	Floor Joist	10	6"	8"	12'
13	Floor Joist	2	6"	8"	7'-8 9/16"
14	Floor Joist	1	6"	8"	7'-10 9/16"
15	Rafter	20	4"	8"	17'-5/8"
16	Door Post	6	6"	6"	7'-10 1/8"
17	Door Header	1	6"	6"	11'-3 1/8"
18	Door Header	2	6"	6"	10'-11 1/8"
19	Stair Post	1	6"	8"	10'-6 1/16"
20	Sill	4	8"	3"	6"
21	Sill	5	8"	3"	11'
22	Sill	1	8"	3"	11'-4"
24	Sill	2	8"	3"	3'-2"
26	Post	2	8"	8"	9'-5 1/2"
27	Plate Post	1	8"	8"	12'-11 5/8"
27	Ridge Post	3	8"	8"	12'-11 5/8"
28	Sill	2	8"	3"	8"

	Pcs.	Lin. Length [ft]	surfacc [ft²]	Volume [BF]
<b>Total</b>	<b>161</b>	<b>1389'-7 1/8"</b>	<b>3306</b>	<b>5629</b>

## HARDWARE LIST

Item#	Design.	Pieces
T-Rex 8" 3-WAY		8
T-Rex 8"X 8"		32
T-Rex 8"X 12"-ALT		4
T-Rex 8"X 12"		8
T-Rex 6"X 8"		5
T-Rex 6"X 6"		18
1" HDPE RISER	6" X 6"	6
1" HDPE RISER	6" X 8"	1
1" HDPE RISER	8" X 8"	2
GRK 12"	Floor Joist	60
GRK 10"	Rafter	40
GRK 8"	Knee Brace	248
5-1/8" GRK RSS Screw	T-REX 8" / TIMBER	256
3-1/2" GRK RSS Screw	T-REX 6" / TIMBER	96
5" ConcreteScrew	T-REX 8" / CONCRETE	72
4" ConcreteScrew	T-REX 6" / CONCRETE	28
5": ConcreteScrew	PT / FOOTING	22
1/2" x 6" Aluminum Pins		46
1/2" x 8" Aluminum Pins		132

## Siding Nailer 4" x 4"

	Pcs.	Lin. Length [ft]	Volume [BF]
<b>Total</b>	<b>112</b>	<b>549'-6"</b>	<b>778</b>

## Treated Lumber 2x8 OR 2x10

	Pcs.	Lin. Length [ft]
<b>Total</b>	<b>8PCS @ 12'</b>	<b>96'</b>

This timber list and fastener list is just a guideline. Please check and verify that all dimension are correct before ordrring materials.

# CONNEX

## POST & BEAM

www.ctpostandbeam.com

COPYRIGHT LAWS PROHIBIT REPRODUCTION OR USE OF THIS DRAWING, IN WHOLE OR IN PART, WITHOUT THE EXPRESSED WRITTEN PERMISSION OF "CONNEX POST AND BEAM"

**Redding V2, 24' x 36'**

DRAWING INFO:  
MATERIAL LIST

DRAWING No. 003

PRINTED: 14.07.2022

to be printed on:  
11" x 17" TABLOID