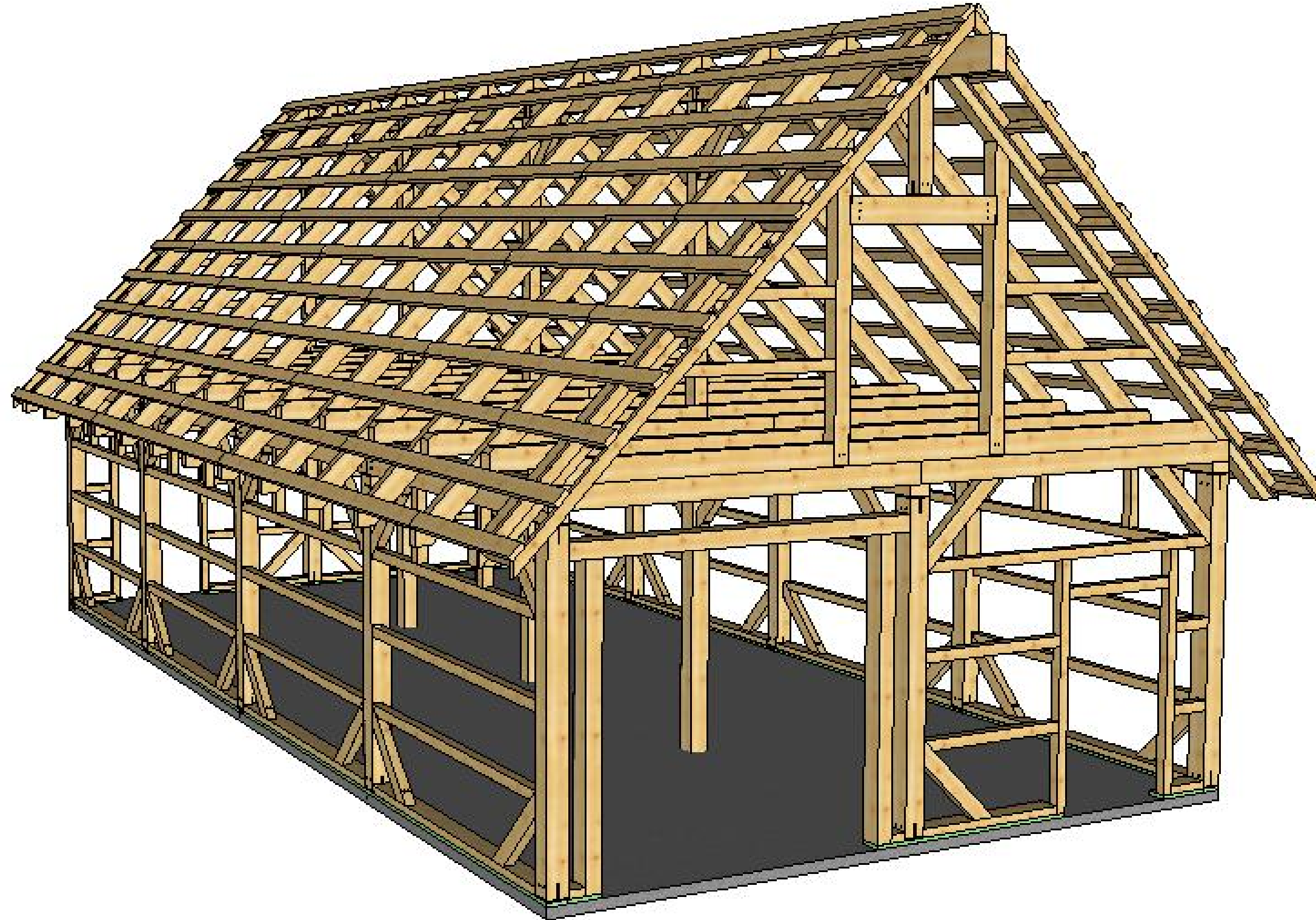


Texas Barn:

24' x 48'



COPYRIGHT LAWS PROHIBIT REPRODUCTION OR USE OF THIS DRAWING IN WHOLE OR IN PART, WITHOUT THE EXPRESSED WRITTEN PERMISSION OF CONNEXT POST AND BEAM, LLC.

DO NOT SCALE DIMENSIONS ON THESE DRAWINGS. THESE IMAGES ARE MACHINE REPRODUCTIONS AND MAY CONTAIN A MARGIN OF ERROR.

CONNEXT
POST & BEAM

24' x 48'

Revisions:
3/16/2020

DRAWING INFO:
Cover Sheet

DRAWING No. 000
PRINTED: 3/23/2020

To be printed on- **11 x 17 Tabloid**

*All timbers shall be equivalent to Spruce, Pine or Fir
No. 2 or better unless otherwise noted*



COPYRIGHT LAWS PROHIBIT REPRODUCTION OR USE OF THIS DRAWING IN WHOLE OR IN PART, WITHOUT THE EXPRESSED WRITTEN PERMISSION OF CONNEXT POST AND BEAM, LLC.

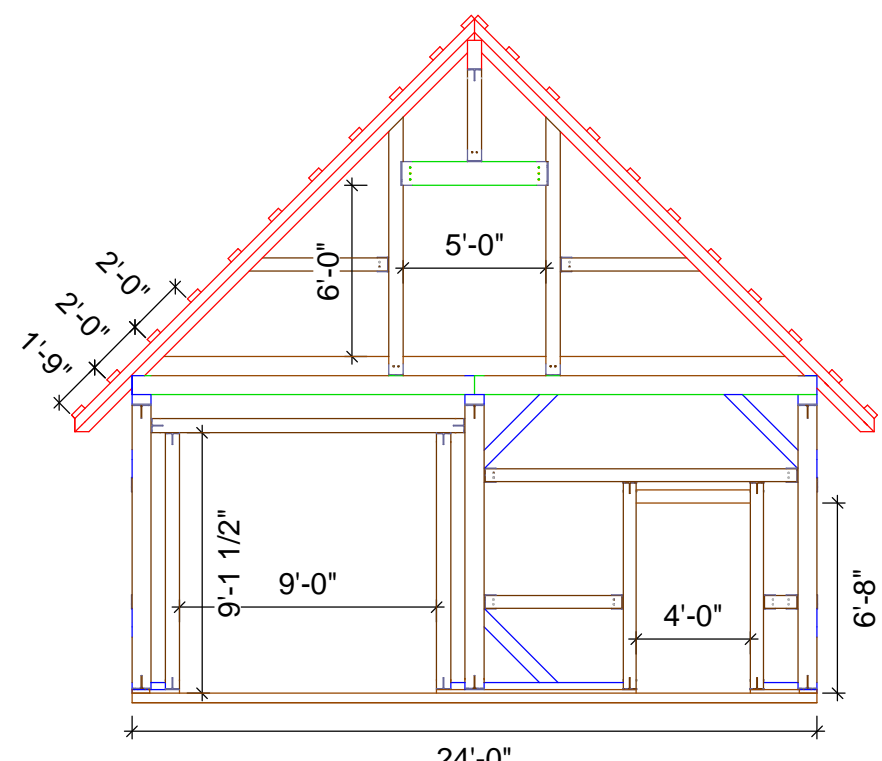
DO NOT SCALE DIMENSIONS ON THESE DRAWINGS. THESE IMAGES ARE MACHINE REPRODUCTIONS AND MAY CONTAIN A MARGIN OF ERROR.

CONNEXT
POST & BEAM
24' x 48'

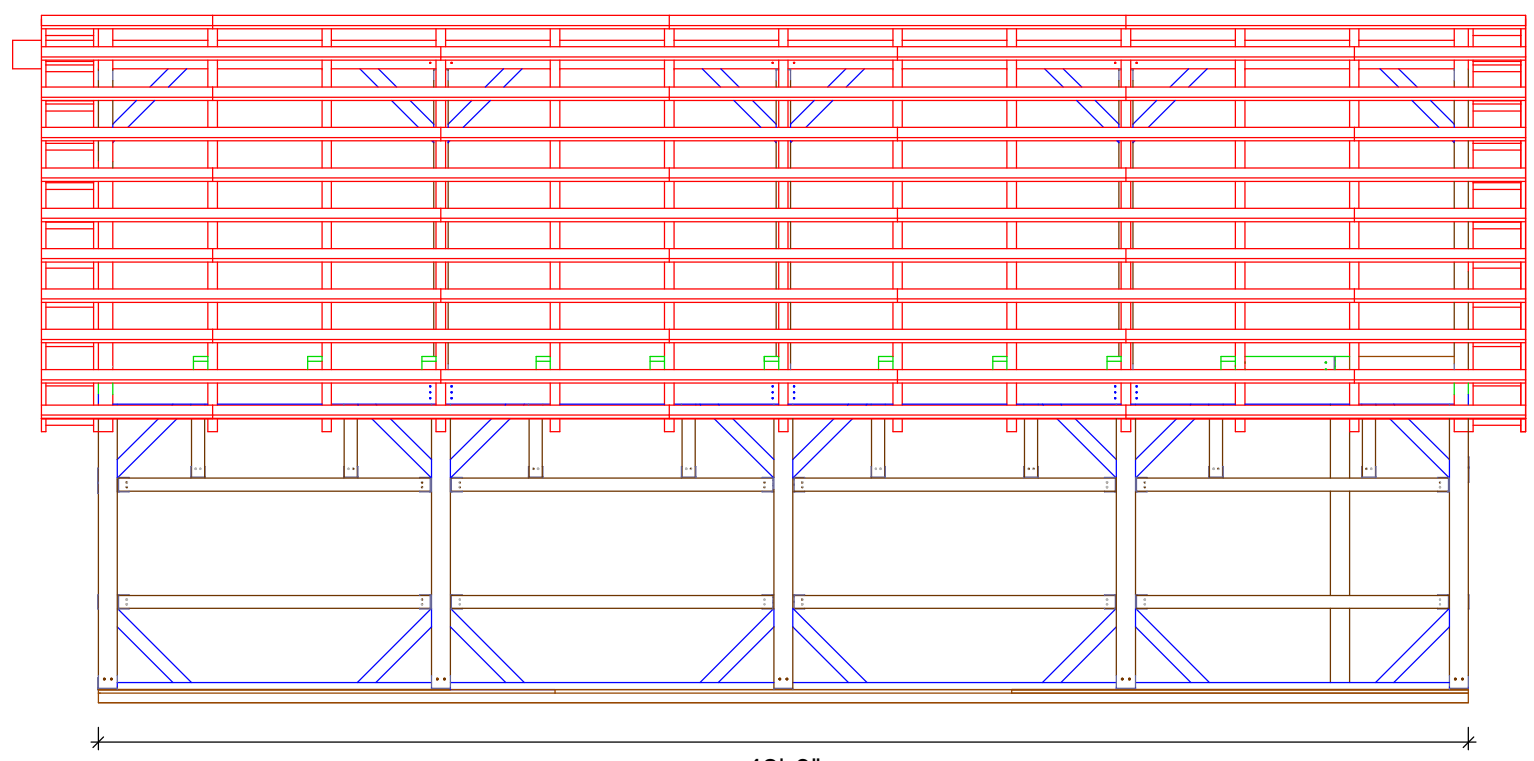
Revisions:
3/16/2020

DRAWING INFO:
Elevations

DRAWING No. 001
PRINTED: 3/23/2020

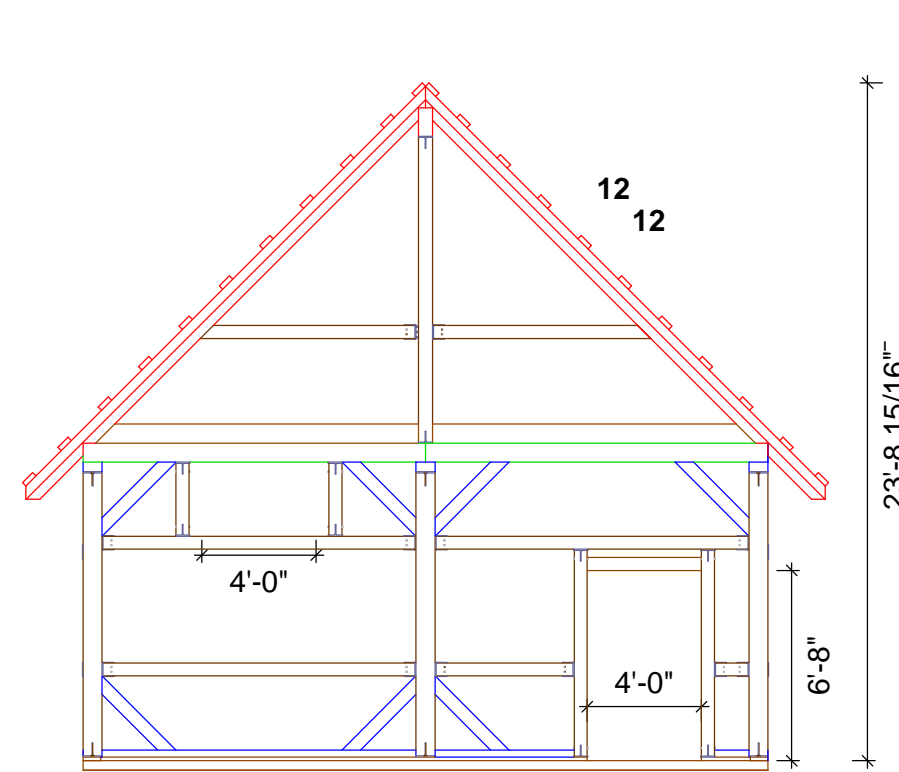


24'-0"
Front

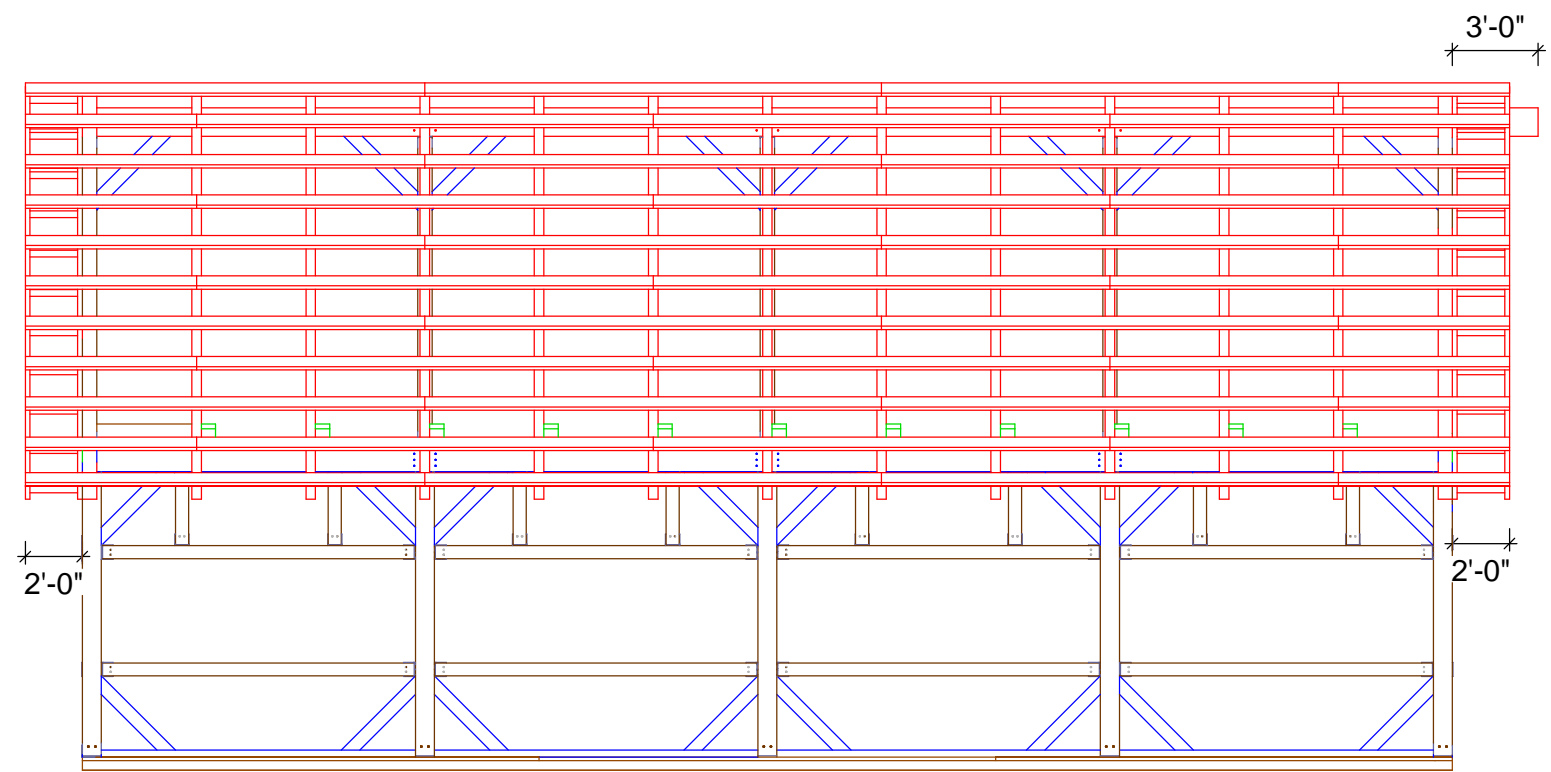


48'-0"
Right

Frame Elevations:
Do Not Scale



Back



Left

Timber List

Wood Type	Part	Pcs.	W[in]	H[in]	Volume[BF]
SPF 2&BTR	PB1	6	8	12	576
SPF 2&BTR	SC4	1	3	8	2
SPF 2&BTR	SC1	5	3	8	110
SPF 2&BTR	SC1	2	3	8	45
SPF 2&BTR	PB2	6	8	12	576
SPF 2&BTR	SC5	1	3	8	10
SPF 2&BTR	SC6	2	3	8	2
SPF 2&BTR	RP1	22	2	6	132
SPF 2&BTR	FR1	8	2	4	107
SPF 2&BTR	FRB1	44	2	4	49
SPF 2&BTR	R2	4	6	8	322
SPF 2&BTR	R1	22	4	8	1181
SPF 2&BTR	RP1	44	2	6	704
SPF 2&BTR	RP1	22	2	6	308
SPF 2&BTR	SR1	1	6	12	90
SPF 2&BTR	SR2	2	6	12	144
SPF 2&BTR	SR3	1	6	12	72
SPF 2&BTR	TB1	4	6	8	192
SPF 2&BTR	CT1	1	6	10	25
SPF 2&BTR	J1	15	6	8	720
SPF 2&BTR	J1-2	3	6	8	144
SPF 2&BTR	J1-3	3	6	8	144
SPF 2&BTR	J3	1	6	8	14
SPF 2&BTR	J2	1	6	8	31
SPF 2&BTR	J4	2	4	8	46
SPF 2&BTR	J5	1	4	8	13
SPF 2&BTR	J7	1	4	8	10
SPF 2&BTR	J6	2	4	8	60
TSW	PTS1	6	2	8	129
TSW	PTS2	1	2	8	2
TSW	PTS3	1	2	8	9
TSW	PTS4	1	2	8	1
TSW	PTS5	1	2	8	23
TSW	PTS6	1	2	8	2
SPF 2&BTR	P5	2	6	6	54

This timber list and fastener list is just a guideline. Please check and verify that all dimension are correct before ordering materials.

Connex is not responsible for left over materials.

Wood Type	Part	Pcs.	W[in]	H[in]	Volume[BF]
SPF 2&BTR	P6	1	6	6	10
SPF 2&BTR	P1	6	8	8	317
SPF 2&BTR	P7	3	6	6	96
SPF 2&BTR	P2	6	8	8	317
SPF 2&BTR	P3	3	8	8	191
SPF 2&BTR	P4	1	6	8	48
SPF 2&BTR	P8	1	6	6	32
SPF 2&BTR	DB1	2	6	8	71
SPF 2&BTR	DB2	1	6	8	44
SPF 2&BTR	SC2	1	3	8	23
SPF 2&BTR	SC3	1	3	8	23
SPF 2&BTR	SC7	1	3	8	10
SPF 2&BTR	SC8	1	3	8	2
SPF 2&BTR	KB1	58	5.5	5.5	638
SPF 2&BTR	SN	2	5.5	5.5	7
SPF 2&BTR	SN	12	5.5	5.5	393
SPF 2&BTR	SN	4	5.5	5.5	88
SPF 2&BTR	SN	2	5.5	5.5	30
SPF 2&BTR	SN	2	5.5	5.5	29
SPF 2&BTR	SN	18	5.5	5.5	136
SPF 2&BTR	SN	8	5.5	5.5	270
SPF 2&BTR	SN	1	5.5	5.5	23
SPF 2&BTR	SN	1	5.5	5.5	23

Wood Type	Pcs.	Volume[BF]
SPF 2&BTR	365	8704
TSW	11	166
Total	376	8870

SPF 2&BTR- Spruce, Pine, Fir Car 2 or better

TSW- Treated Soft Wood (Pressure Treated Lumber)

Fastener List:

ITEM	Pieces
CR8080	15
CR8080	6
CR83W	9
CR6060	9
CR63W	3
CR6080	10
CR6010	2
CR5555	100
1/2" x 8" Pins	114
1/2" x 6" Pins	260
5" GRK Caliburn Screws	90
3 1/2" GRK RSS Screws	744
5 1/8" GRK RSS Screws	90
6" GRK RSS Screws	52
8" GRK RSS Screws	348
10" GRK RSS Screws	68

Part Abbreviation	Item
PB	Plate Beam
SC	Sill Cover
KB	Knee Brace
RP	Roof Purlin
FR	Fly Rafter
FRB	Fly Rafter Blocking
R	Rafter
SR	Structural Ridge
TB	Tie Beam
CT	Collar Tie
J1	Joist
PTS	Pressure Treated Sill
P	Post
SN	Siding Nailer
DB	Door Buck

General Notes:

1). The frame design shown has not been engineered and is only intended as a general outline. It is the sole responsibility of the homeowner and/or contractor to determine if local or state code requires an engineer's stamp on plans before erection. Connex does not design to a specific area and for that matter will not hold any reasonability or warranty plans if plans do not satisfy the requirements of local and/or state building codes.

2). The homeowner/contractor is responsible for locating and the protection of all existing utilities and adjacent structures throughout all phases of construction.

3). The homeowner and/or contractor (builder) is responsible for implementing job site safety and construction procedures in accordance with national, state, and local safety requirements. The design, adequacy and safety of erection, bracing, shoring, temporary supports, etcetera is the sole responsibility of the builder. The builder is responsible for the stability of the structure prior to the completion of all gravity and lateral framing, roof and floor diaphragms and finish materials. Connex assumes no responsibility for any changes or modifications that may be made to the plans by the builder.

4). These plans do not cover work in areas not explicitly shown on the plans, including stick framed portions, adjacent buildings, basements/crawl- space areas, or any other changes or modifications.

5). Homeowner/contractor shall verify all dimensions and job site conditions before commencing work and shall report any discrepancies to Connex if modifications need to be made.

6). Use written dimensions. Do not use scaled dimensions. Where no dimension is provided, consult Connex for clarification before proceeding with the work.

7). Timbers- Unless otherwise noted, solid sawn timber shall be equivalent to ungraded eastern white pine No. 2 or better. Timbers shall be rough sawn, and sized to full stated dimensions (e.g. 8x8 = 8.0" x 8.0").

8). Timber screws- Unless noted otherwise, all screws shall be GRK RSS, GRK Caliburn or Fastenmaster Timberloks. Screw holes shall not be pre-drilled unless otherwise noted.



COPYRIGHT LAWS PROHIBIT REPRODUCTION OR USE OF THIS DRAWING IN WHOLE OR IN PART, WITHOUT THE EXPRESSED WRITTEN PERMISSION OF CONNEXT POST AND BEAM, LLC.

DO NOT SCALE DIMENSIONS ON THESE DRAWINGS. THESE IMAGES ARE MACHINE REPRODUCTIONS AND MAY CONTAIN A MARGIN OF ERROR.



Revisions:
3/23/2020

DRAWING INFO:
Material List

DRAWING No. 002
PRINTED: 3/23/2020