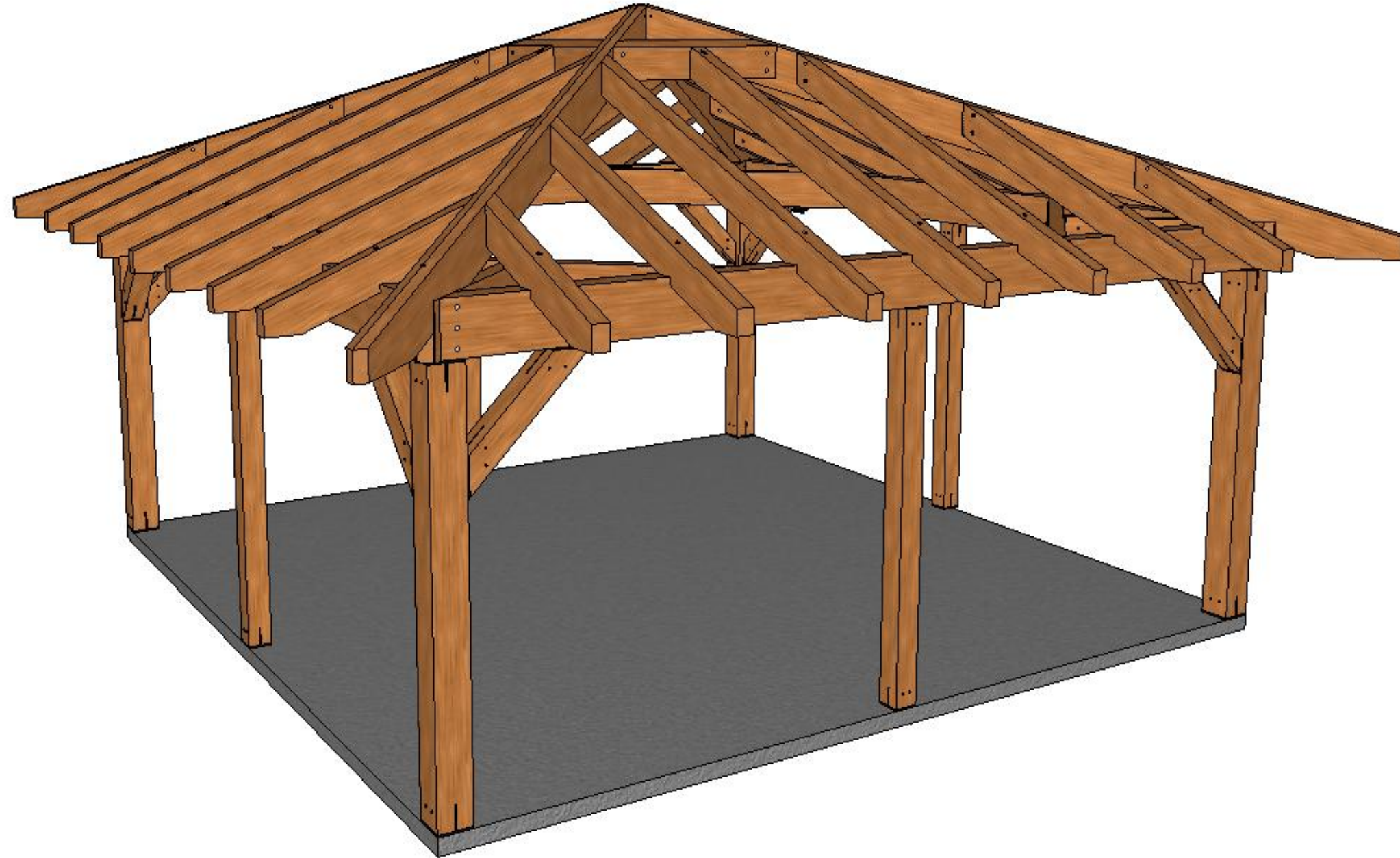


Chalmers Pergola

20' x 20' Hip Roof



To be printed on- **11 x 17 Tabloid**

*All timbers shall be equivalent to Douglas Fir
No. 2 or better unless otherwise noted*



COPYRIGHT LAWS PROHIBIT
REPRODUCTION OR USE OF THIS
DRAWING IN WHOLE OR IN PART,
WITHOUT THE EXPRESSED WRITTEN
PERMISSION OF CONNEXT
POST AND BEAM, LLC.

DO NOT SCALE DIMENSIONS ON
THESE DRAWINGS. THESE IMAGES
ARE MACHINE REPRODUCTIONS AND
MAY CONTAIN A MARGIN OF ERROR.

CONNEXT
POST & BEAM
20' x 20' HIP ROOF

Revisions:
4/17/2020

DRAWING INFO:
Cover Sheet

DRAWING No. 000
PRINTED: 4/18/2020



COPYRIGHT LAWS PROHIBIT REPRODUCTION OR USE OF THIS DRAWING IN WHOLE OR IN PART, WITHOUT THE EXPRESSED WRITTEN PERMISSION OF CONNEXT POST AND BEAM, LLC.

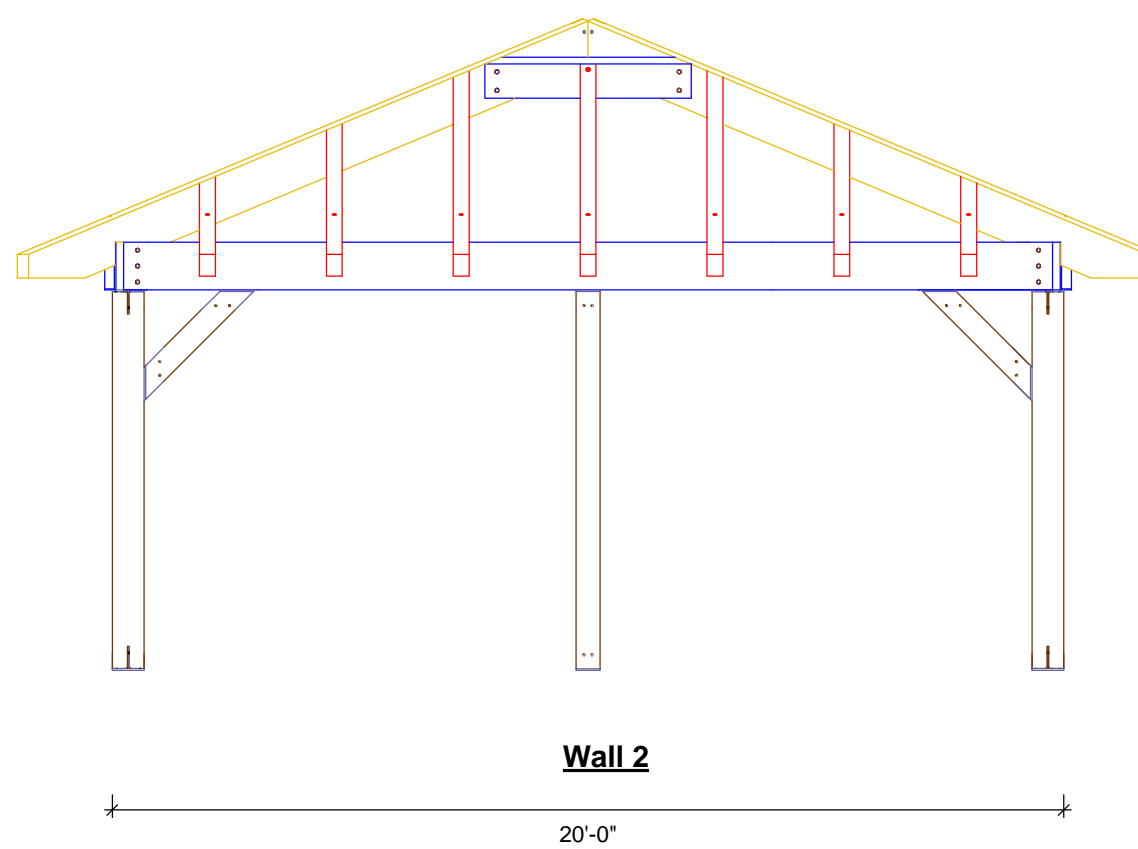
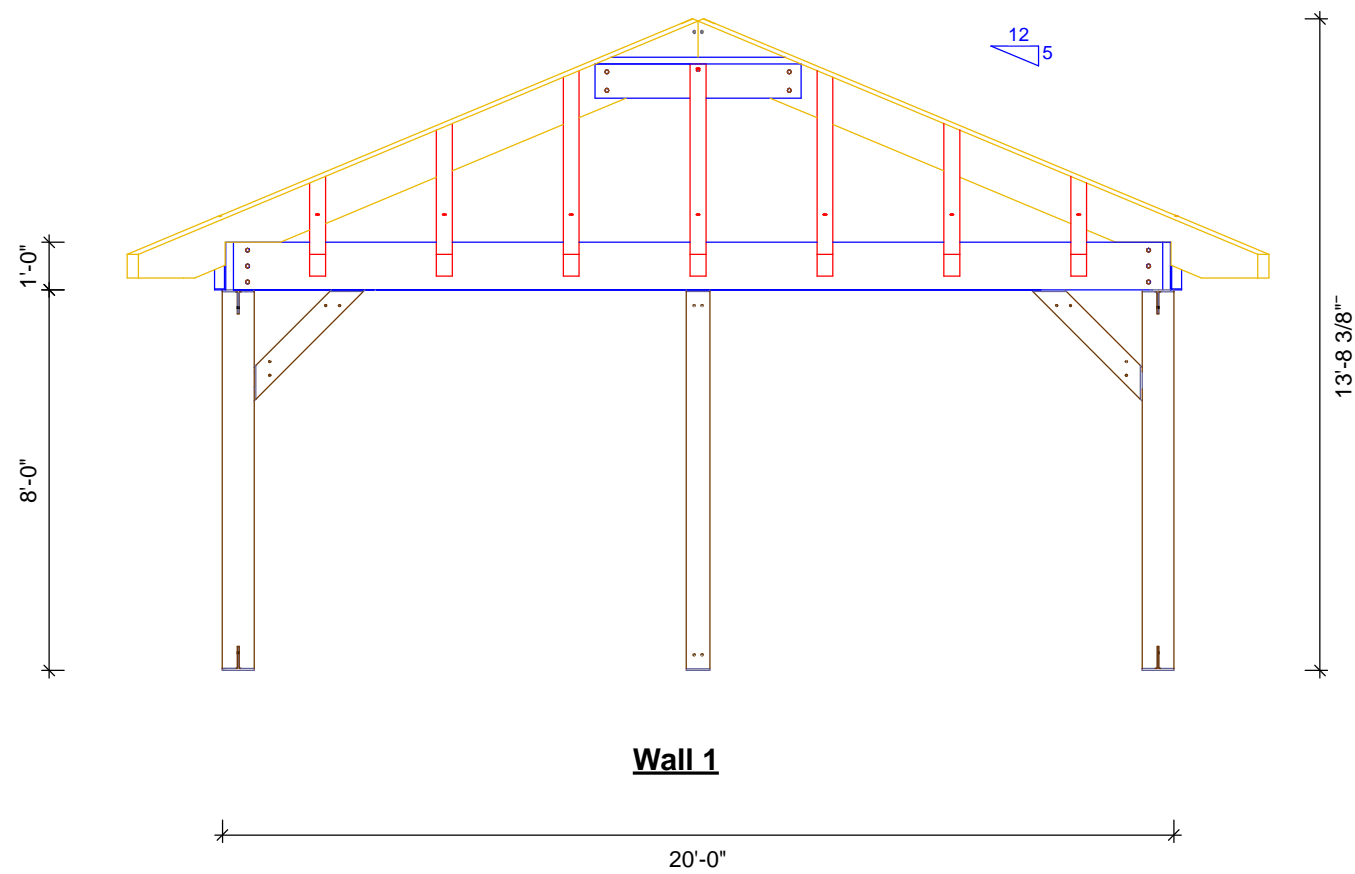
DO NOT SCALE DIMENSIONS ON THESE DRAWINGS. THESE IMAGES ARE MACHINE REPRODUCTIONS AND MAY CONTAIN A MARGIN OF ERROR.

CONNEXT
POST & BEAM
20' x 20' HIP ROOF

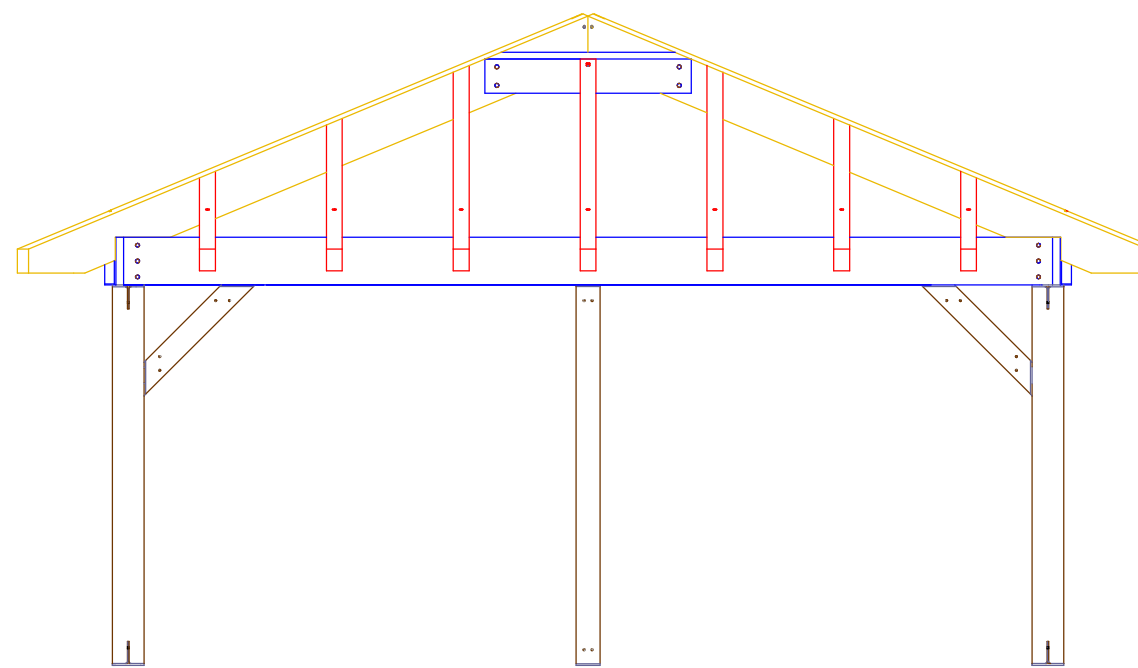
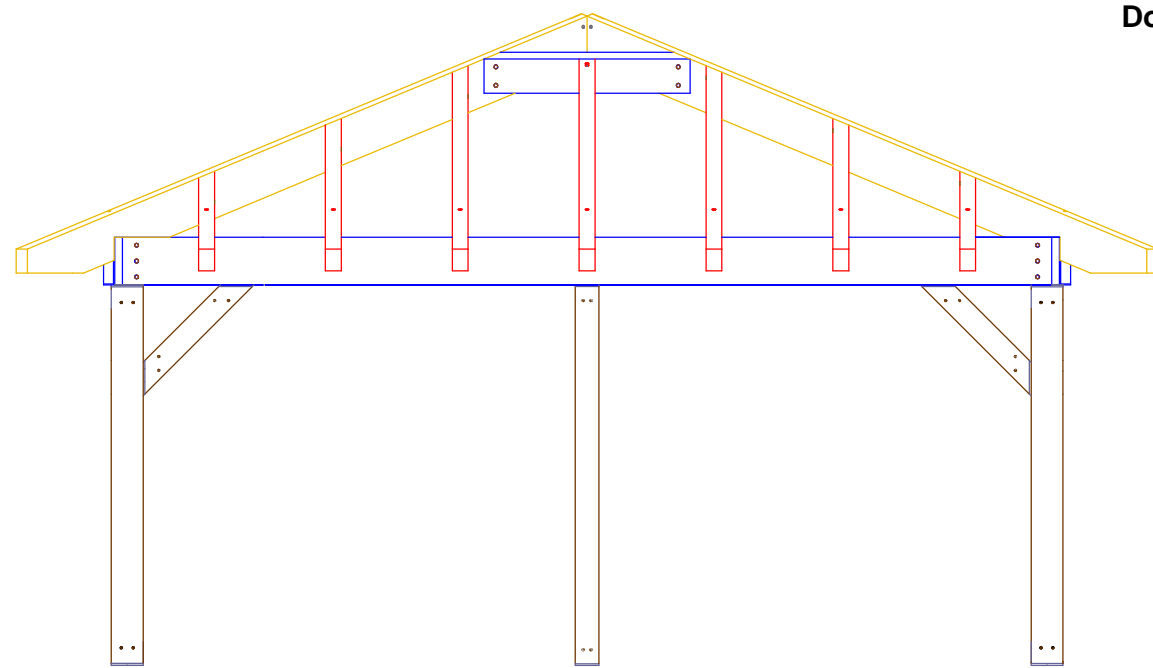
Revisions:
4/17/2020

DRAWING INFO:
Elevations

DRAWING No. 001
PRINTED: 4/18/2020



Elevations:
Do Not Scale



Timber List

Wood Type	Sort.#	ITEM	Pcs.	width[in]	height[in]	length[ft]	Volume[BF]
DF	302, 309	Hip-Jack Rafter	8	4	8	4'-5 3/16"	96
DF	303, 308	Hip-Jack Rafter	8	4	8	7'-3 7/8"	160
DF	304, 307	Hip-Jack Rafter	8	4	8	10'-2 9/16"	216
DF	306	Common Rafter	4	4	8	10'-6 7/8"	112
DF	305	Rising Purlin	4	4	10	4'-4"	56
DF	500	Plate Connector	4	4	12	4'-5 1/16"	71
DF	502	Plate Connector	4	4	12	8'	128
DF	301	Hip Rafter	4	4	12	17'-7 7/8"	283
DF	102	Wall Brace	8	6	6	3'-2 3/8"	76
DF	101	Post	4	6	6	7'-11 1/8"	96
DF	300	Bottom Plate	4	6	12	19'-6 5/16"	468
DF	100	Post	4	8	8	7'-10 15/16"	168

Wood Type	Volume[BF]
DF	1930
Total	1930

DF - Douglas Fir

Fastener List

Item	Description	Pieces
1/2" x 4" Aluminum Pins	T-Rex Connectors	12
1/2" x 6" Aluminum Pins	T-Rex Connectors	80
1/2" x 8" Aluminum Pins	T-Rex Connectors	16
CR6080-D	Wall Braces	16
CR8080	Corner Posts	8
CR6060	Interior Posts	8
CR4012	Plate Connector	4
3-1/8" GRK RSS Screws	T-Rex Connectors	136
5" GRK Caliburn Screw	T-Rex to Concrete	56
5-1/8" GRK RSS Screw	T-Rex Connectors	44
8" GRK RSS Screws	Plates and Plate Connectors	88
12" GRK RSS Screws	Rafters	32
1" Harwood Plug	Plugs for Screw Holes	104
R-C4414	Hip Rafters	1
TT-Metal Dowel 3/4 Inch	Hip Rafters	8
5/16" Hex Bolt	Hip Rafters	8

This timber list and fastener list is just a guideline. Please check and verify that all dimension are correct before ordering materials.

Connex is not responsible for left over materials.

General Notes:

1). The frame design shown has not been engineered and is only intended as a general outline. It is the sole responsibility of the homeowner and/or contractor to determine if local or state code requires an engineer's stamp on plans before erection. Connex does not design to a specific area and for that matter will not hold any reasonability or warranty plans if plans do not satisfy the requirements of local and/or state building codes.

2). The homeowner/contractor is responsible for locating and the protection of all existing utilities and adjacent structures throughout all phases of construction.

3). The homeowner and/or contractor (builder) is responsible for implementing job site safety and construction procedures in accordance with national, state, and local safety requirements. The design, adequacy and safety of erection, bracing, shoring, temporary supports, etcetera is the sole responsibility of the builder. The builder is responsible for the stability of the structure prior to the completion of all gravity and lateral framing, roof and floor diaphragms and finish materials. Connex assumes no responsibility for any changes or modifications that may be made to the plans by the builder.

4). These plans do not cover work in areas not explicitly shown on the plans, including stick framed portions, adjacent buildings, basements/crawl- space areas, or any other changes or modifications.

5). Homeowner/contractor shall verify all dimensions and job site conditions before commencing work and shall report any discrepancies to Connex if modifications need to be made.

6). Use written dimensions. Do not use scaled dimensions. Where no dimension is provided, consult Connex for clarification before proceeding with the work.

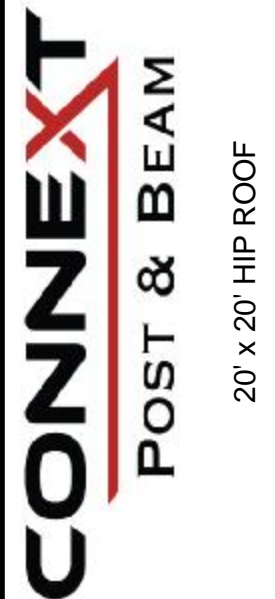
7). Timbers- Unless otherwise noted, solid sawn timber shall be equivalent to ungraded Douglas Fir No. 2 or better. Timbers shall be rough sawn, and sized to full stated dimensions (e.g. 8x8 = 8.0" x 8.0").

8). Timber screws- Unless noted otherwise, all screws shall be GRK RSS, GRK Caliburn or Fastenmaster Timberloks. Screw holes shall not be pre-drilled unless otherwise noted.



COPYRIGHT LAWS PROHIBIT REPRODUCTION OR USE OF THIS DRAWING IN WHOLE OR IN PART, WITHOUT THE EXPRESSED WRITTEN PERMISSION OF CONNEX POST AND BEAM, LLC.

DO NOT SCALE DIMENSIONS ON THESE DRAWINGS. THESE IMAGES ARE MACHINE REPRODUCTIONS AND MAY CONTAIN A MARGIN OF ERROR.



Revisions:
4/17/2020

DRAWING INFO:
Material List

DRAWING No. 002
PRINTED: 4/18/2020