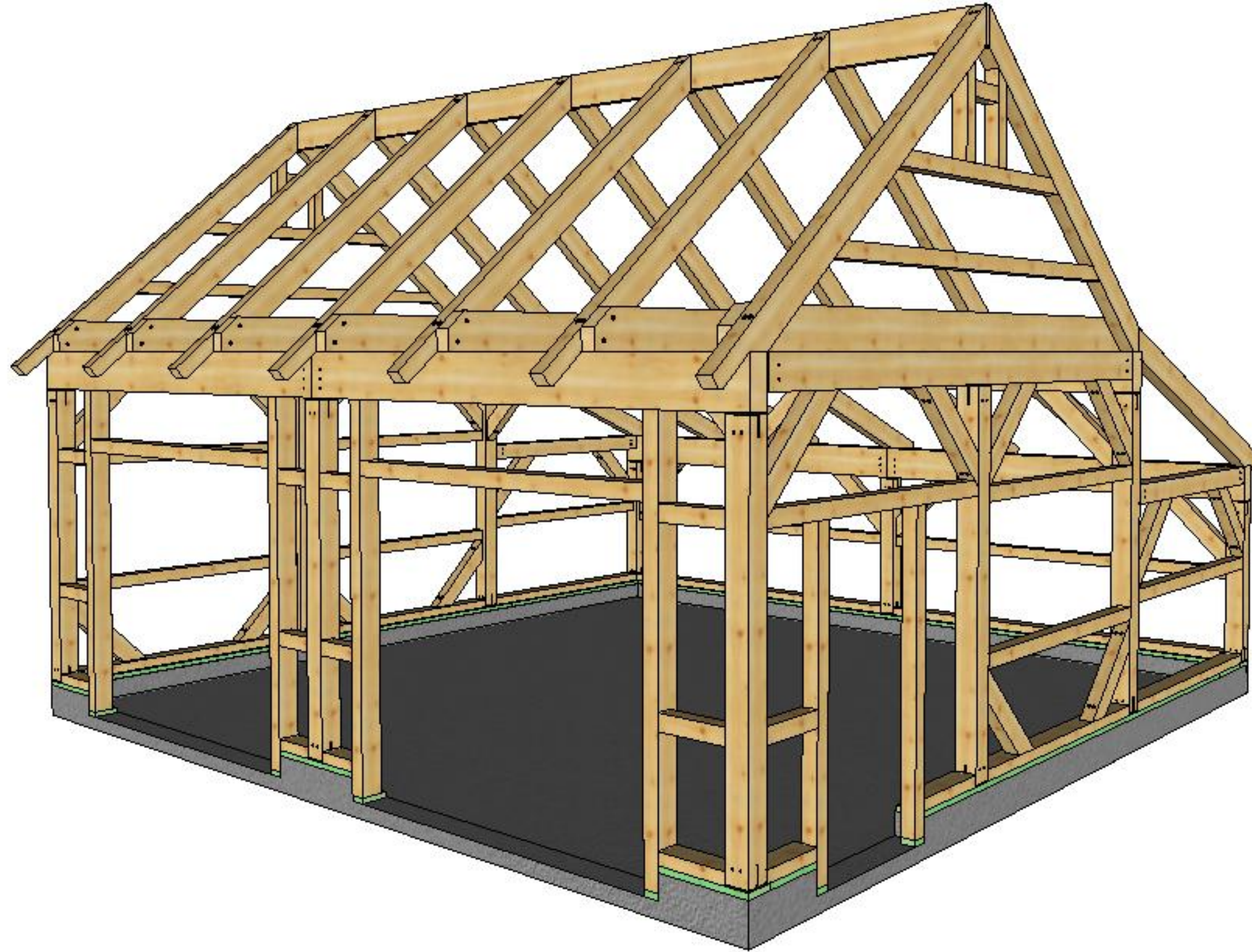


Winchester Barn

24' x 24'



To be printed on- **11 x 17 Tabloid**

*All timbers shall be equivalent to Eastern White Pine
No. 2 or better unless otherwise noted*



COPYRIGHT LAWS PROHIBIT REPRODUCTION OR USE OF THIS DRAWING IN WHOLE OR IN PART, WITHOUT THE EXPRESSED WRITTEN PERMISSION OF CONNEXT POST AND BEAM, LLC.

DO NOT SCALE DIMENSIONS ON THESE DRAWINGS. THESE IMAGES ARE MACHINE REPRODUCTIONS AND MAY CONTAIN A MARGIN OF ERROR.

CONNEXT
POST & BEAM

24' x 24'

Revisions:
3/19/2020

DRAWING INFO:
Cover Sheet

DRAWING No. 000
PRINTED: 3/23/2020



COPYRIGHT LAWS PROHIBIT REPRODUCTION OR USE OF THIS DRAWING IN WHOLE OR IN PART, WITHOUT THE EXPRESSED WRITTEN PERMISSION OF CONNEXT POST AND BEAM, LLC.

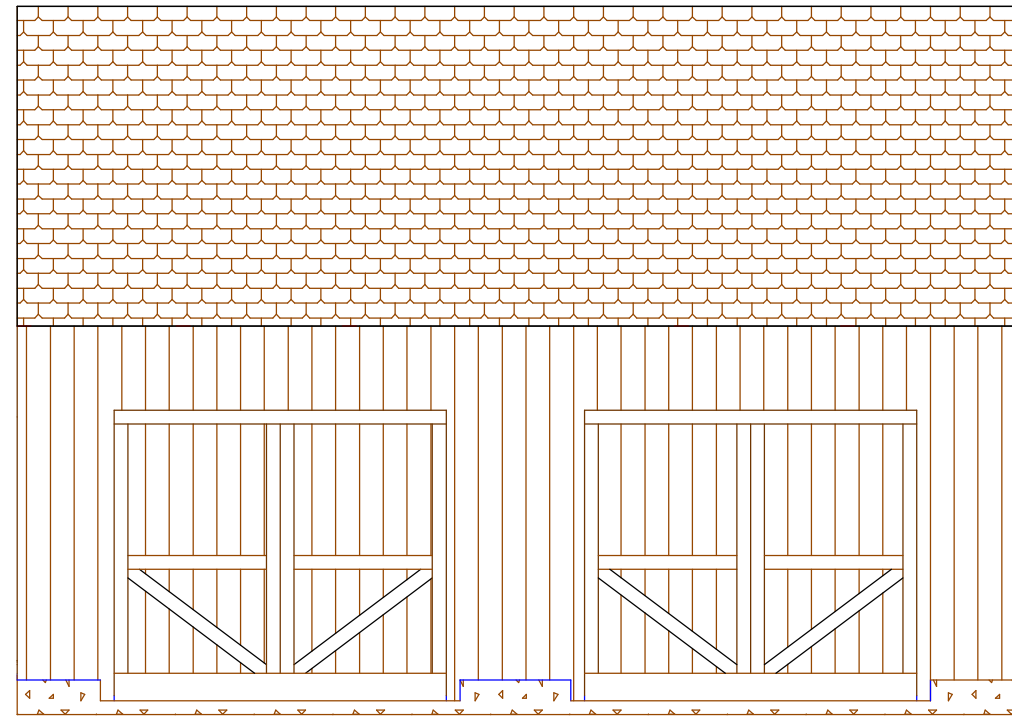
DO NOT SCALE DIMENSIONS ON THESE DRAWINGS. THESE IMAGES ARE MACHINE REPRODUCTIONS AND MAY CONTAIN A MARGIN OF ERROR.

CONNEXT
POST & BEAM
24' x 24'

Revisions:
3/19/2020

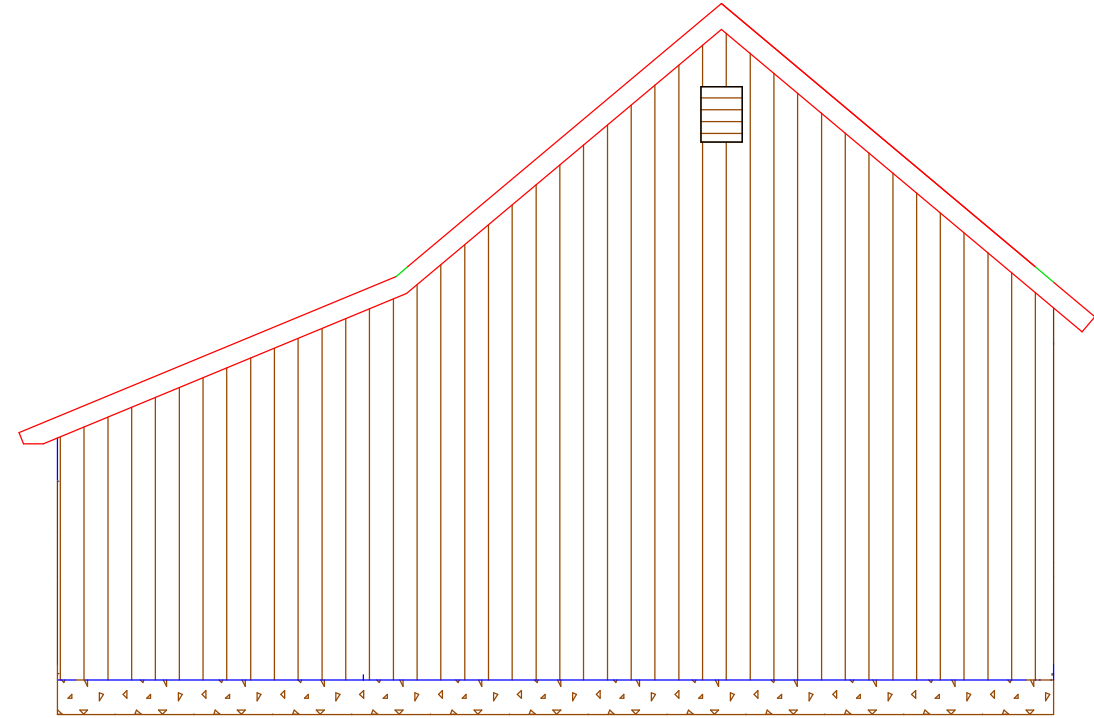
DRAWING INFO:
Elevations

DRAWING No. 001
PRINTED: 3/23/2020



24'-0"

Front



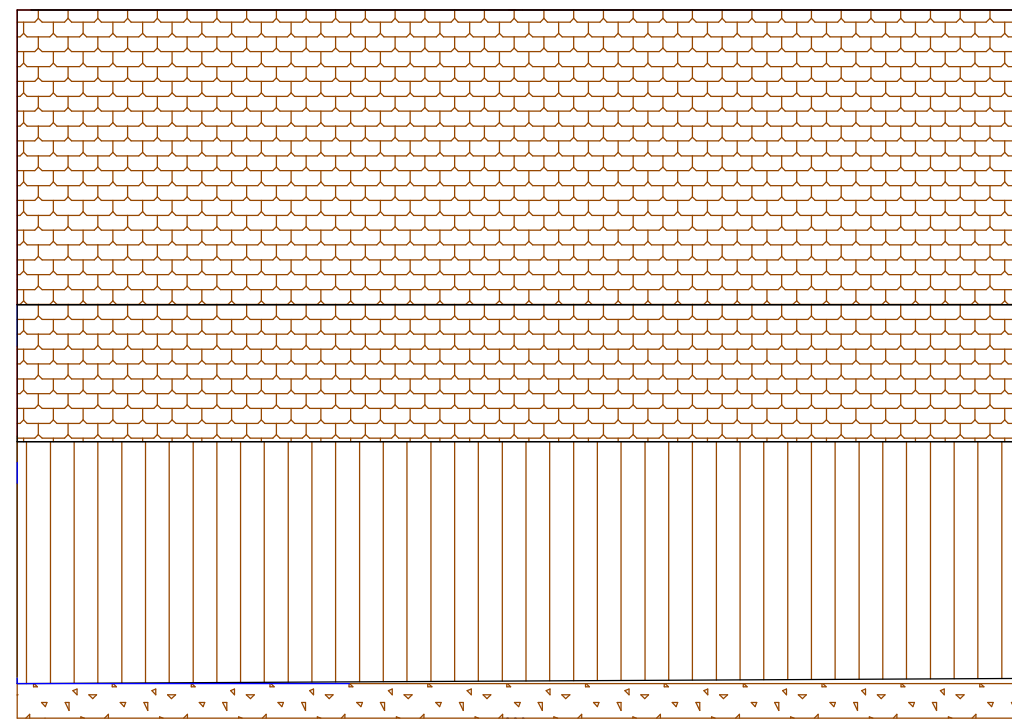
24'-0"

Left

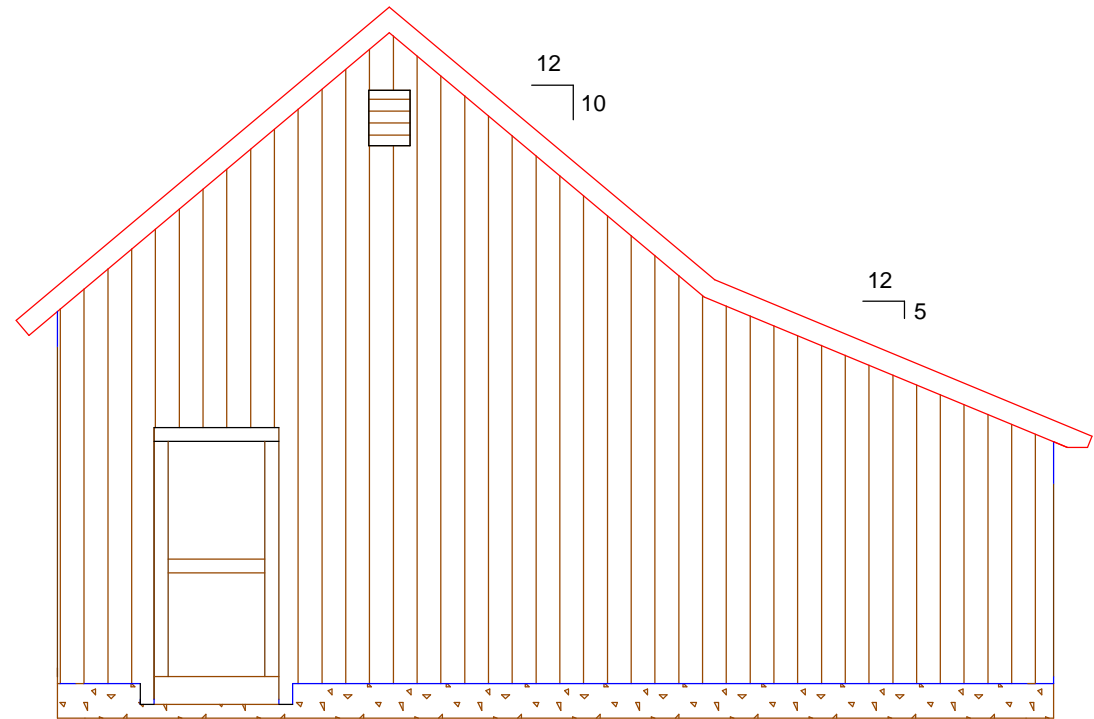
16'-3 9/16"

Sample Elevations:

Do Not Scale



Back



12
10

12
5

Right

5'-11 1/2"

Timber List

Wood Type	Beam-Name	Definition	Pcs	.width[in]	height[in]	length[ft]	Volume[BF]
EWP	RB1	Ridge Beam	2	2	10	12'	40
EWP	SPC2	Sill Plate Cover	2	3	6	1'-1"	3
EWP	SPC1	Sill Plate Cover	2	3	6	1'-6"	5
EWP	SPC4	Sill Plate Cover	1	3	6	1'-6"	2
EWP	SPC4	Sill Plate Cover	1	3	6	2'-1"	3
EWP	SPC4	Sill Plate Cover	3	3	6	7'-3"	33
EWP	SPC4	Sill Plate Cover	2	3	6	7'-6"	23
EWP	SPC3	Sill Plate Cover	1	3	6	11'-3"	17
EWP	SPC3	Sill Plate Cover	1	3	6	11'-3"	17
EWP	SN1	Siding Nailer	2	4	4	1'	3
EWP	SN1	Siding Nailer	4	4	4	1'-1"	6
EWP	SN1	Siding Nailer	5	4	4	1'-6"	10
EWP	SN1	Siding Nailer	4	4	4	2'-9/16"	10
EWP	SN1	Siding Nailer	2	4	4	6'-6 1/2"	17
EWP	SN1	Siding Nailer	2	4	4	6'-8 1/8"	18
EWP	SN1	Siding Nailer	7	4	4	7'-3"	68
EWP	SN1	Siding Nailer	2	4	4	7'-6"	20
EWP	SN1	Siding Nailer	2	4	4	11'-9/16"	29
EWP	SN1	Siding Nailer	2	4	4	11'-3"	30
EWP	KB1	Knee Brace	26	4	6	3'	156
EWP	DB2	Door Buck	2	4	6	8'	32
EWP	DB1	Door Buck	4	4	6	8'-6"	68
EWP	R3	Rafter	7	4	8	9'-10 1/16"	184
EWP	R2	Rafter	7	4	8	10'-6"	196
EWP	R1	Rafter	7	4	8	11'-7 9/16"	217
EWP	CT1	Collar Tie	7	4	10	16'	373
EWP	P5	Post	2	6	6	4'-7 9/16"	28
EWP	P6	Post	1	6	6	4'-7 9/16"	14
EWP	TB2	Tie Beam	2	6	6	7'-5 1/8"	45
EWP	P1	Post	4	6	6	7'-11 1/8"	95
EWP	P2	Post	1	6	6	7'-11 1/8"	24
EWP	P3	Post	2	6	6	8'-3 1/8"	50
EWP	P4	Post	1	6	6	8'-6 5/8"	26
EWP	TB1	Tie Beam	2	6	8	14'-11 1/8"	119
EWP	PB1	Plate Beam	6	6	12	12'	432
TSW	PTS9	Pressure Treated Sill	2	2	4	4"	
TSW	PTS8	Pressure Treated Sill	4	2	8	4"	2
TSW	PTS7	Pressure Treated Sill	1	2	8	7 1/2"	1
TSW	PTS1	Pressure Treated Sill	1	2	8	1'-4 1/2"	2
TSW	PTS5	Pressure Treated Sill	1	2	8	1'-8 1/2"	2
TSW	PTS1	Pressure Treated Sill	2	2	8	2'	5
TSW	PTS2	Pressure Treated Sill	1	2	8	2'-8"	4
TSW	PTS4	Pressure Treated Sill	1	2	8	6'-9"	9
TSW	PTS6	Pressure Treated Sill	1	2	8	8'	11
TSW	PTS3	Pressure Treated Sill	3	2	8	16'	64

Wood Type	Volume[BF]
EWP	2413
TSW	100
Total	2513

EWP- Eastern White Pine

TSW- Treated Soft Wood (pressure treated lumber)

Fastener List

Item	Pieces
10" GRK RSS (rafters)	28
12" GRK RSS (rafters)	28
5" GRK RSS (rafters)	28
6" GRK RSS (collar ties)	28
8" GRK RSS (knee braces)	104
T-Rex CR63W	3
T-Rex CR6060	23
T-Rex CR6080	4
6" T-Rex Pins	78
5" GRK Caliburn T-Rex Screws	54
3 1/2" GRK RSS T-Rex Screws	126

This timber list and fastener list is just a guideline. Please check and verify that all dimension are correct before ordering materials.

Connex is not responsible for left over materials.

General Notes:

1). The frame design shown has not been engineered and is only intended as a general outline. It is the sole responsibility of the homeowner and/or contractor to determine if local or state code requires an engineer's stamp on plans before erection. Connex does not design to a specific area and for that matter will not hold any reasonability or warranty plans if plans do not satisfy the requirements of local and/or state building codes.

2). The homeowner/contractor is responsible for locating and the protection of all existing utilities and adjacent structures throughout all phases of construction.

3). The homeowner and/or contractor (builder) is responsible for implementing job site safety and construction procedures in accordance with national, state, and local safety requirements. The design, adequacy and safety of erection, bracing, shoring, temporary supports, etcetera is the sole responsibility of the builder. The builder is responsible for the stability of the structure prior to the completion of all gravity and lateral framing, roof and floor diaphragms and finish materials. Connex assumes no responsibility for any changes or modifications that may be made to the plans by the builder.

4). These plans do not cover work in areas not explicitly shown on the plans, including stick framed portions, adjacent buildings, basements/crawl- space areas, or any other changes or modifications.

5). Homeowner/contractor shall verify all dimensions and job site conditions before commencing work and shall report any discrepancies to Connex if modifications need to be made.

6). Use written dimensions. Do not use scaled dimensions. Where no dimension is provided, consult Connex for clarification before proceeding with the work.

7). Timbers- Unless otherwise noted, solid sawn timber shall be equivalent to ungraded eastern white pine No. 2 or better. Timbers shall be rough sawn, and sized to full stated dimensions (e.g. 8x8 = 8.0" x 8.0").

8). Timber screws- Unless noted otherwise, all screws shall be GRK RSS, GRK Caliburn or Fastenmaster Timberloks. Screw holes shall not be pre-drilled unless otherwise noted.



COPYRIGHT LAWS PROHIBIT REPRODUCTION OR USE OF THIS DRAWING IN WHOLE OR IN PART, WITHOUT THE EXPRESSED WRITTEN PERMISSION OF CONNEXT POST AND BEAM, LLC.

DO NOT SCALE DIMENSIONS ON THESE DRAWINGS. THESE IMAGES ARE MACHINE REPRODUCTIONS AND MAY CONTAIN A MARGIN OF ERROR.

CONNEXT
POST & BEAM

24' x 24'

Revisions:
3/23/2020

DRAWING INFO:
Material List

DRAWING No. 002
PRINTED: 3/23/2020